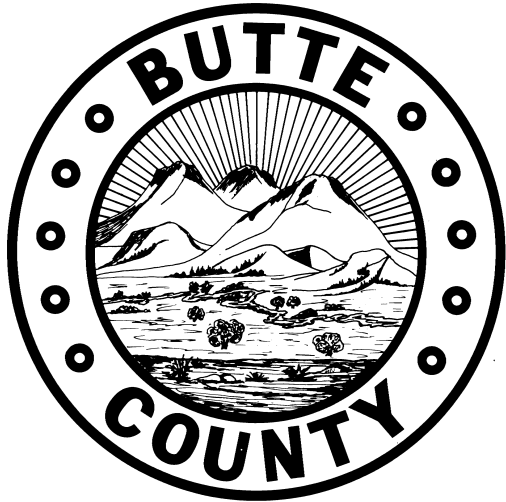


Butte County General Plan 2030
Presented to Rotarians in Oroville, Chico
and Durham

November 21, 2006

Butte County
Department of Development Services
Tim Snellings, Director

Butte County General Plan – 2030



**Comprehensive General Plan/
Zoning Ordinance Update &
Environmental Impact Report**

Tim Snellings, DDS Director

Why Plan?



What is a General Plan?

General Plan

- Under California Law, the General Plan is considered the "constitution" for land use and development and represents a jurisdiction's own vision and **policy** for the future.
- The General Plan is shaped by input of citizens of Butte County and adopted by their elected representatives serving on the Board of Supervisors.
- The General Plan is considered a master "blueprint", all other County regulations are required to be consistent with its instruction and policy.

Is a General Plan enough?

- A special subset of regulations, such as the Zoning and Subdivision Ordinances, Specific Plans, and Capital Improvement Plans, serve to **implement** the General Plan's **policies** and programs by providing more detailed and specific information not contained within the General Plan.

General Plan – Why You Should Care...

- How much Ag land will possibly stay in production?
- How much land will be developed for housing and businesses and how do we encourage an appropriate balance of jobs and housing for a healthy economy?
- What new opportunities are there for new lands to come into Ag production?
- How can we preserve our natural habitats while maintaining these working landscapes?
- Is there a need for a new city/town and if so where?
- What is the future of the lands located in-between our existing cities and communities?
- Where will new job centers be developed and will there be adequate housing to accommodate increasing populations?
- Is there a regional solution to wastewater treatment & disposal?
- How can traffic congestion be alleviated and transportation needs met?
- How can we protect our high quality water supply?
- MANY other questions need to be asked...

General Plan 2030 – Keys to Success

- A Few Definitions
- Clarify Roles
- Website and Use of Technology
- Clearly DEFINE Success

In order to write a General Plan, we must agree on some things...

- **A Few Definitions**
- Roles
- Website and Use of Technology
- Clearly DEFINE Success

The Project

Butte County General Plan 2030

1. Comprehensive General Plan Update
2. New Zoning Ordinance
3. Environmental Impact Report (EIR)

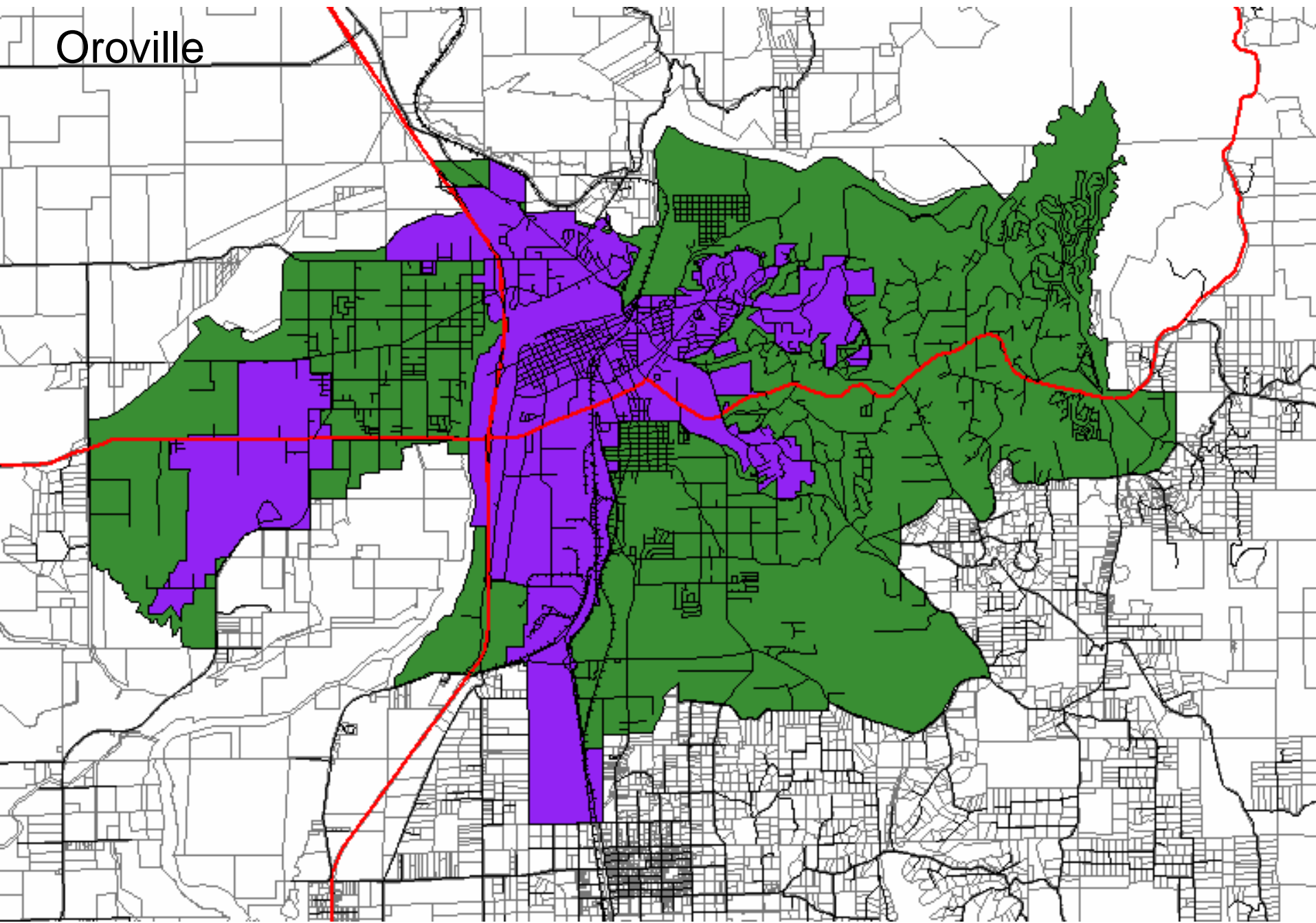
Jurisdictions

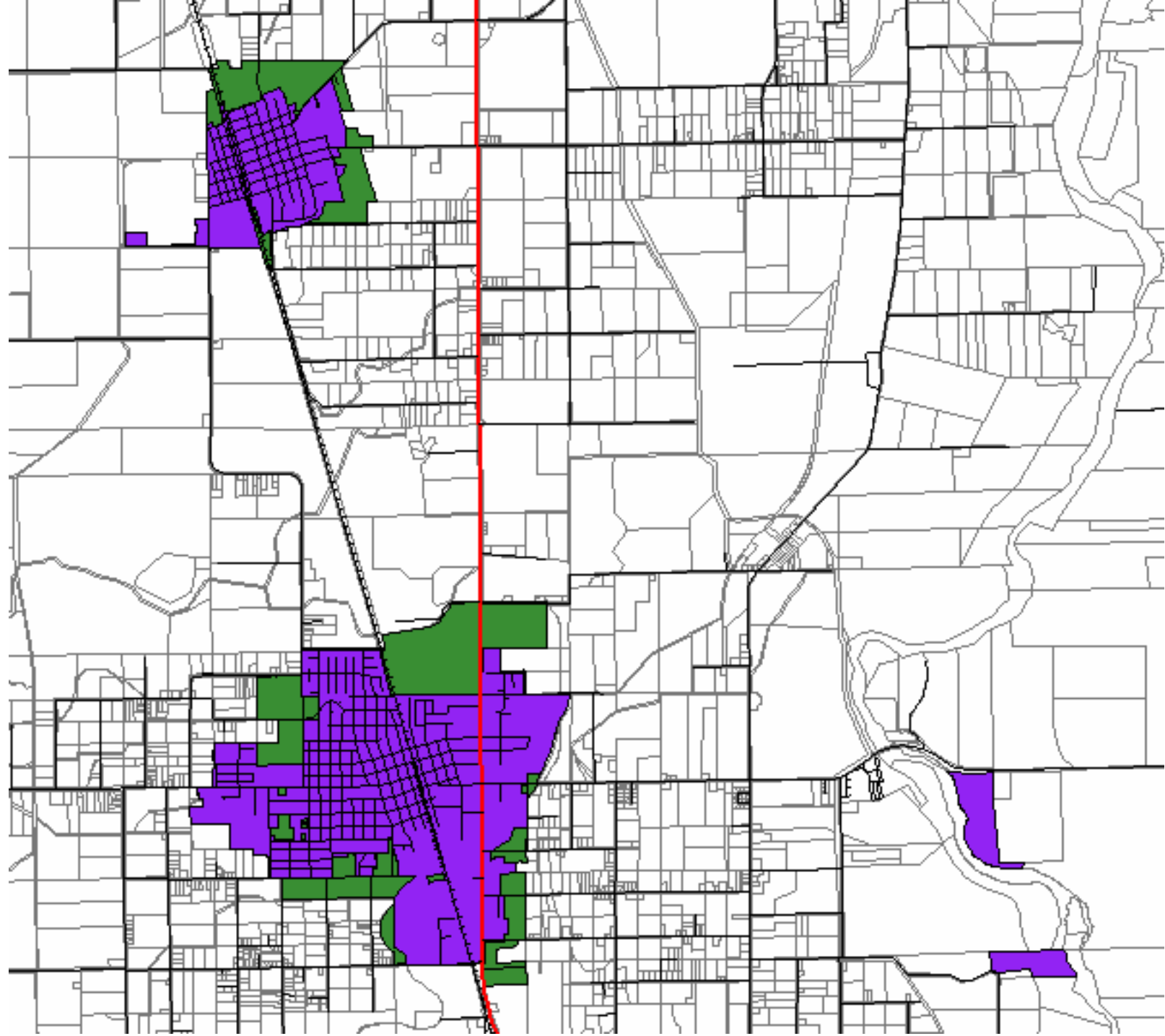
- County
(1,634 square miles)
- Cities & Town
(59 square miles within the cities of Biggs, Chico, Gridley, Oroville & the Town of Paradise)

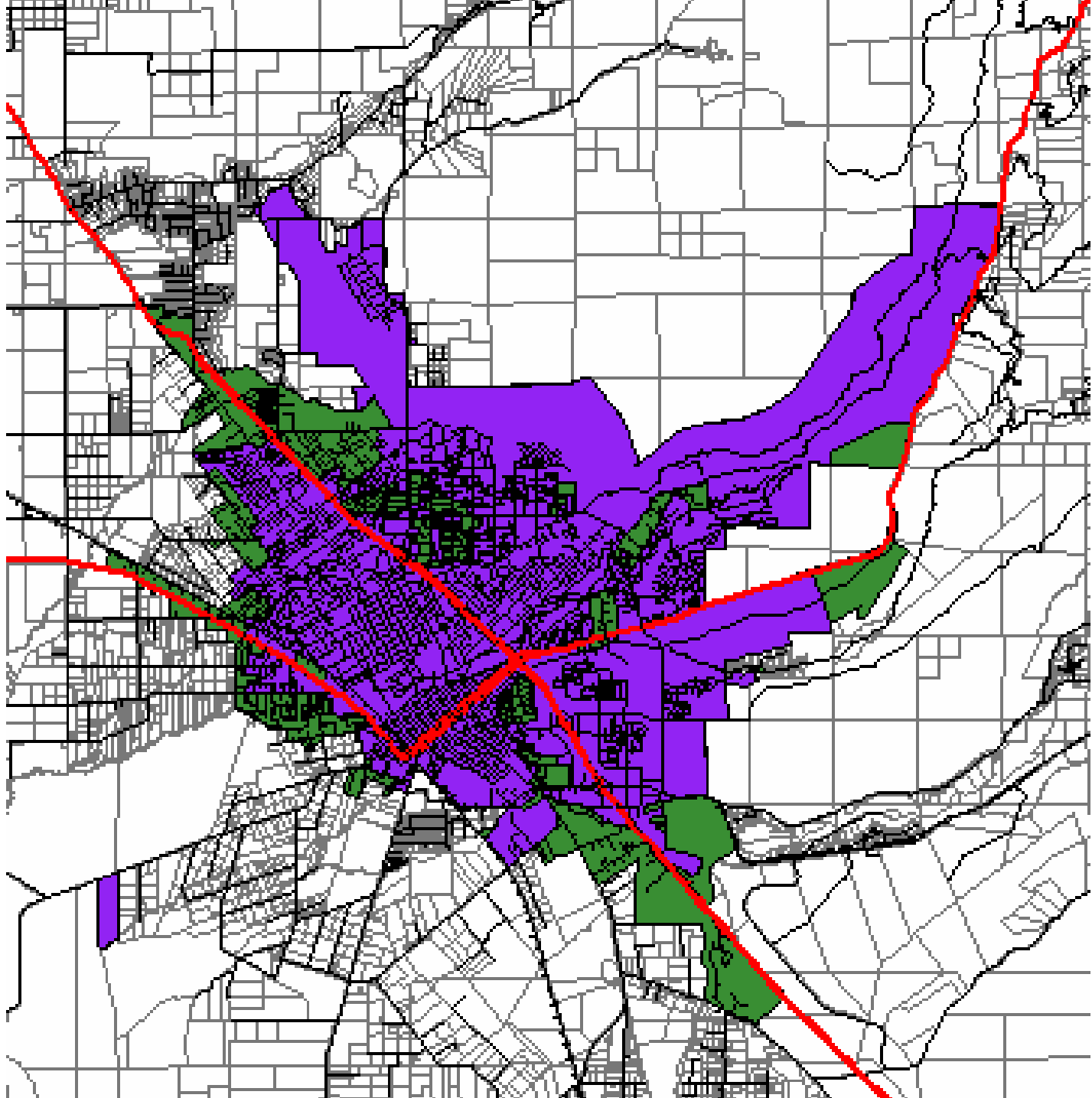
Sphere of Influence

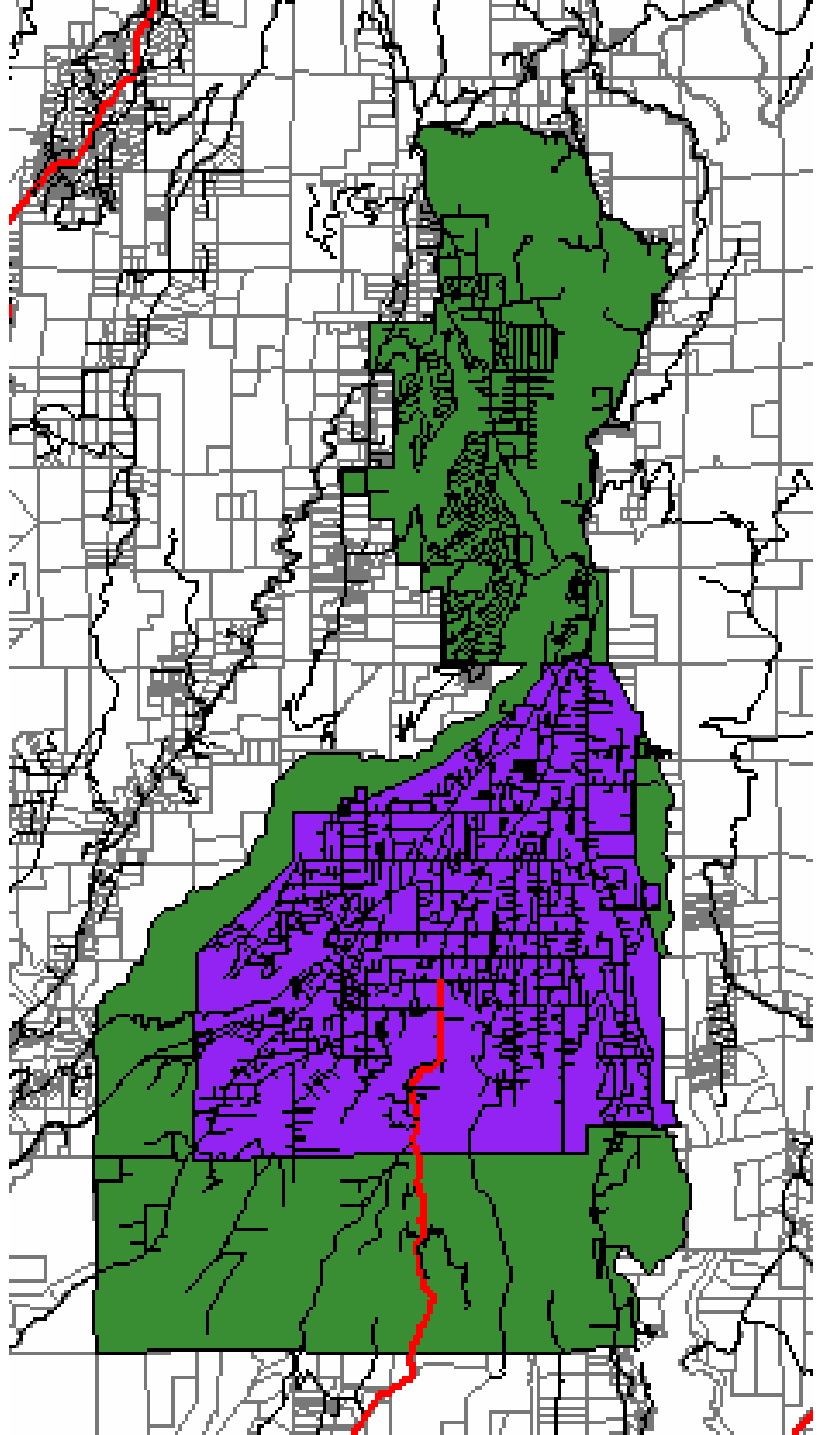
- The physical boundary and service area that a local governmental agency is expected to serve.
- Establishment of this boundary is necessary to determine which governmental agencies can provide services in the most efficient way to the people and property in any given area.

Oroville









Jurisdictions

- County
- Cities & Town
- Special Districts

- Communities
- Neighborhoods

Special Districts

- State law defines a special district as "any agency of the state for the local performance of governmental or proprietary functions within limited boundaries" (Government Code §16271 [d]).
- In plain language, a special district is a separate local government that delivers public services to a particular area.

Special Districts

Special districts can be distinguished by their four common characteristics:

- A form of government.
- Governed by a board.
- Provides services and facilities.
- Has defined boundaries.

Special Districts are NOT:

- Special districts are not state government
- Special districts are not city or county government
- Special districts are not school districts

Special Districts in Butte County:

- Cemetery
- Irrigation
- Recreation & Park Districts
- Reclamation
- Utility
- Sanitary Sewer
- Water

BEFORE talking about the General Plan and our process...

- A Few Definitions
- Roles
- Website and Use of Technology
- Clearly DEFINE Success

Lots of Players & Agendas...

- The challenge is to develop a coordinated plan that includes all of the County, cities/town, Special Districts and the Public...
- How can we do this?
- What will we do?

Roles in the Process

- General Public
- Board of Supervisors
- Planning Commission
- Development Services Staff
- Other County Departments
- Cities, Districts, State Agencies
- Consultant Team
- Citizens Advisory Committee
- Technical Advisory Groups

Roles in the Process

General Public

- Local expertise
- History
- Ideas for the future
- Experience
- Suggest ideas/changes/concerns
- It's their County

Roles in the Process

Board of Supervisors

- Set Policy Direction/Direct Staff
- Final Decision Makers
- Standing item on every Board agenda for the next 3 years about this project
- If they see us going off course, please tell me ASAP so that we can do a course correction

Roles in the Process

Planning Commission

- Review recommendations from the Citizens Advisory Committee, Consultant & County Staff
- Make recommendations to the Board of Supervisors

Roles in the Process

Development Services Staff

- DDS Director in charge of/responsible for project
- Liaison with the Board, Planning Commission, County Departments, Citizens Advisory Committee, Consultant & Public
- Historical and local resource
- Ground truthing information & policy
- Meeting Facilitation
- Keep project on track
- Coordinate Citizens Advisory Committee/Consultant
- Publishing Notices/Website
- Working with media
- Manage Consultant

Roles in the Process

Other County Departments

- Engage/Own the process/Plan
- Allocate staff time to work on this
- Provide information about their area of expertise and concern to the Department of Development Services
- Don't show up at the end and say, 'why didn't you include...'?

Roles in the Process

Cities, Districts, State Agencies

- Provide information about their area of expertise and concern to the Department of Development Services
- Coordinate their future strategies with ours (cities/town are or will be doing GP updates soon)

Roles in the Process

Citizens Advisory Committee

- Expertise on geographic area
- Expertise on issues
- Expression of ideas/vision of future
- Cross section of community
- Represent the diverse general public
- Make recommendations to the Board of Supervisors, via Staff/Consultant and Planning Commission process

Initial Roster

1. Helene Ginter
2. Kate Leyden
3. Michael Weissenborn
4. Emily Fisher
5. James D. Smith
6. Jason Bougie
7. R. John Anderson
8. Georgie Bellin
9. John J. Carter
10. Tovey Giezentanner
11. Todd Hall
12. Bruce McClintock
13. Allen L. Hackett
14. Michael Evans
15. Anthony Rushing
16. Calli-Jane Burch
17. Paula Kelso
18. Allan Jernigan
19. Scott Fowler
20. William Kienzle
21. William Black
22. Raquelana Mani Pina
23. Sue P. Seropian
24. Steve Rodowick
25. April D. Grossberger
26. Scarlett S. Kettell
27. Scott McNall
28. Harman Gosal
29. Edward M. Miller
30. Pia Sevelius



Jason Brouge
@jasonbrouge

John Carter
@john_carter

Scott Fowler
@scott_fowler

Tony [unclear]
@tony[unclear]

John Carter
@john_carter

Scott Fowler
@scott_fowler

Paula Kelso
@paula_kelso

Todd Hall
@todd_hall





CITIZENS ADVISORY COMMITTEE MEETINGS

- | | |
|--|-------------------|
| • Kick-off Meeting #1 | November 16, 2006 |
| • Kick-off Meeting #2 | December 7, 2007 |
| 1. Issue Identification | March 2007 |
| 2. Development of Alternatives | May 2007 |
| 3. Alternatives Finalization | August 2007 |
| 4. Alternatives Evaluation and Selection | March 2008 |
| 5. Goals and Policies Development | August 2008 |
| 6. Draft General Plan | December 2008 |
| 7. Housing Element | January 2009 |
| 8. Zoning Code Issue Identification | February 2009 |

Roles in the Process

Consultant

- Technical analysis
- Drafting Policy solutions
- Drafting Reports
- Drafting the General Plan
- Provide content for workshops and presentations
- Facilitate workshops
- Public Outreach and Participation Program

Butte County

Tim Snellings, Development Services Director
Dan Breedon, Project Manager
Pete Calarco, Chuck Thistlethwaite, Noel
Carvalho

DESIGN, COMMUNITY & ENVIRONMENT

Project Management; General Plan, Community Outreach, Environmental Review

David Early, AICP, Principal, Lead Facilitator
Catherine Reilly, Senior Associate-in-Charge
Michael Brilliot, Associate, Project Manager

Crawford, Multari &
Clark Associates

Zoning Ordinance

Paul Crawford, Principal

Fehr & Peers
Associates

*Circulation and
Transportation*

Jeff Clark, Senior Associate

Jones & Stokes
Associates

*Biology, Cultural Resources,
Air Quality, Noise*

Maggie Townsley,
Project Director

Bay Area Economics

*Economic and Fiscal
Analysis*

Matt Kowta, Principal

Questa Engineering

*Infrastructure, Geology,
Hydrology, Hazards*

Norm Hantzche,
Managing Engineer

Gallaway Consulting

Migratory Deer Range

Jody Gallaway,
President and Wildlife
Biologist

Scope of Work

- **Public Participation and Outreach**
- **Advanced Website dedicated to GP**
- **32 public meetings**
- **City and County Summit Meeting (1)**
- **Individual City/County Meetings (5)**
- **Area Plan Workshops (5)**
- **Sub-Area Workshops (3)**
- **Additional PC/Board Meetings (22)**

****DDS Staff will be the lead in coordinating the GP Technical Advisory Groups**

General Plan

Technical Advisory Groups

- Chico Planning Area
- Oroville Planning Area
- Paradise Planning Area
- Gridley/Biggs Planning Area
- Tribal Areas
- Rural Development –Non Urban Planning Area
- Agricultural Resources
- Economic Development
- Natural Resources (Deer Range, Timber Management, Watersheds, Groundwater, Minerals)
- Environment (Open Space, Conservation, Hillsides/Foothill Development)
- Recreation and Cultural Resources

Special Note About Joint Planning Opportunities With Cities/Town

- Joint General Plan Update process provides a reason to share information, data and ideas.
- A Sphere of Influence is an important planning opportunity for city/county collaboration
- Joint planning between the cities/Town & the County will help to eliminate inconsistencies in Sphere of Influence areas as well as potential 'cost savings' for our citizens.
- Potential benefits of joint planning within the Spheres of incorporated cities include:

Benefits of Joint Planning

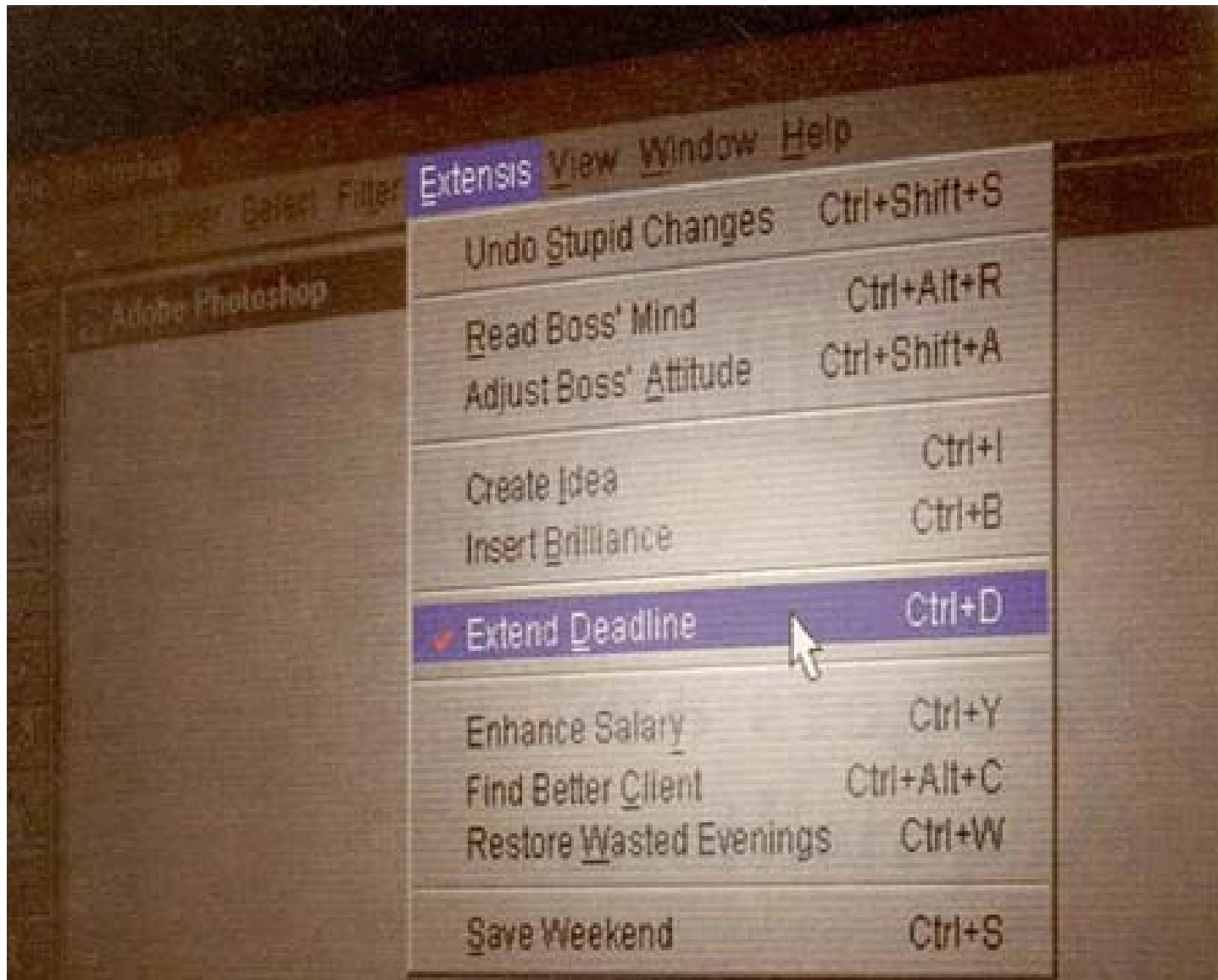
- Promoting Infill and a compact urban form,
- Discouraging sprawl
- Consistent permit processes and development standards,
- Regional (cities/county) strategy on Affordable Housing
- Preservation of resource/Ag lands, and
- Maintenance and Consistency of circulation patterns.

Why Coordinate?: Create consistency amongst plans, same standards, cost effective, clarity for public

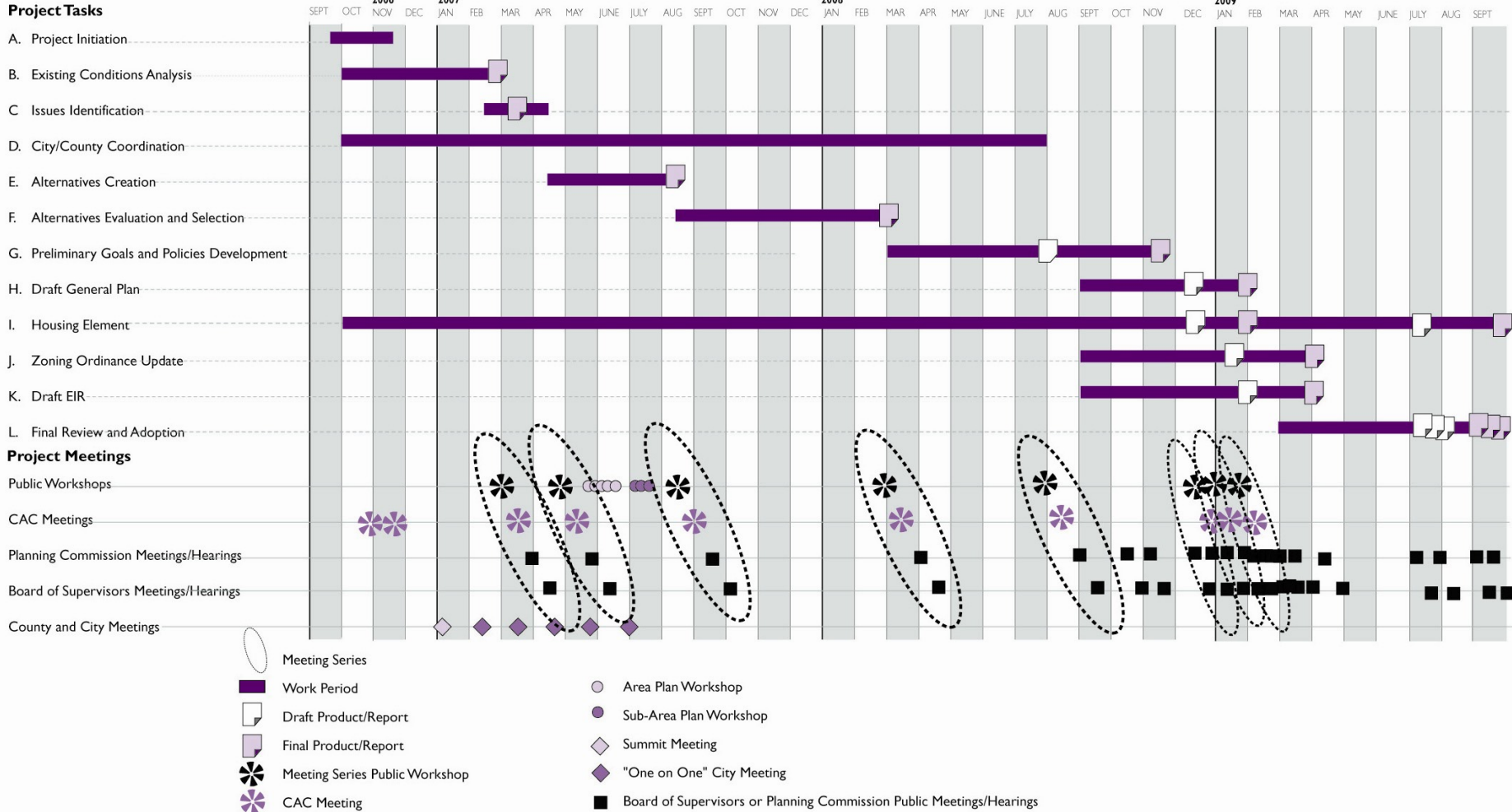
It's all about the process. . .

- The General Plan update process is evolutionary and participatory in nature.
- We must adapt to shifting priorities as the General Plan Update process unfolds.
- We must be inclusive of all ideas, yet look for “common ground”.
- Transparency is a KEY
- Website will be used throughout the process
- www.buttegeneralplan.net

Project Timeline



Project Schedule



General Plan – Key Challenges

- Facilitating Public Participation
- Expect challenges and let's deal with them together
- Keeping the process moving in a timely manner
- Making sure of internal consistency (Calaveras Case – inconsistent Land Use and Circulation Elements)
- Keeping the General Plan 'General'

Why is this time different?

- New DDS Director, Asst Director and Planning Manager
- Dec 13, 2005, BOS approved 2 dedicated staff positions
- Approved budget
- Engaged Board of Supervisors
- Approved DRAFT Principles
- Citizens Advisory Committee formed
- Consultant Hired (DC&E) with clear timeline
- Board Subcommittee
- Work on Program 2.2 helps
- Project ownership by staff/me
- New tools to help – GIS, Website, MS Project, etc.
- Failure is NOT an option
- WE are going to do this!!!

BEFORE talking about the General Plan and our process...

- A Few Definitions
- Roles
- Website and Use of Technology
- Clearly DEFINE Success



Butte County General Plan/Zoning Ordinance Update Website

[General Plan Homepage](#)

[Development Services Homepage](#)

Welcome to the Official Butte County General Plan Update Website

Last Update: 2006-11-19

First Citizens Advisory Committee meeting held last Thursday night. It was a very successful next step in the journey. [Review the Summary Notes from the meeting HERE.](#)

Stay tuned for more info - presentations, handouts, etc.. Links discussed at the meeting: [Butte LAFCO](#) | [CA Special Districts Association](#) | [What's So Special About Special Districts](#) | [Cal LAFCO](#) <updated 2006-11-19>

Citizens Advisory Committee (CAC) meeting scheduled: Thursday, November 16th from 5:00pm to 9:00pm ([FINAL AGENDA](#)) and Thursday, December 7th from 5:00pm to 9:00pm ([DRAFT AGENDA](#)). Both meetings will be held at the Butte College cafeteria (main college, building 24 on the following [Map](#)). County staff, the Board of Supervisors sub-committee and the consultant team, Design Community and Environment (DC&E), are looking forward to meeting with you all. ([Email Update Sent to the General Plan Update List](#)) <Updated 2006-11-14>

2006-09-12 Board of Supervisors Meeting

Board hires [DC&E](#) consulting team for General Plan/Zoning Ordinance/EIR project - ([Staff Report on Contract with DC&E](#)) | [Summary Notes of Meeting](#) (updated 2006-09-15)

- Board appoints 30 initial members of the public to the [Citizens Advisory Committee](#) | [Summary Notes of Meeting](#).

Comments/Questions can be sent to staff at dsgeneralplan@buttecounty.net

- Background Information
- Calendar
- eBinder
- FAQs
- Glossary of Terms
- Links
- Citizens Advisory Committee
- Butte Photos

Welcome to the Butte County General Plan/Zoning Ordinance Update 2030 Website.



This is the place where you can keep track of all of the happenings with this exciting, community process. We are in the process of '**Charting the Course**'...so stay tuned and please check back here soon. We envision a process that will provide a variety of means of participation, such as Town Hall meetings, Online forums, Online Forms for

submission of information, Questionnaires, Surveys, and much, much more. The goal is to develop a General Plan that accurately reflects the diversity of Butte County AND casts a vision for our future through the year 2030.

Until we get our specific information posted, please do your own research about General Plans and the process using the [links](#).

Please send your suggestions and/or comments directly to us at dsgeneralplan@buttecounty.net.

Join the Butte County General Plan/Zoning Ordinance Update email list!
Enter your email address below then click the Join List button.

JOIN LIST

Subscribe Unsubscribe

[Powered By CFMagic List](#)



Butte County or Yosemite??
Answer: Waterfall off Table Mountain in Butte County, photo taken by Dan Breedon, April 3, 2006

http://www.buttegeneralplan.net/ebinder/default.asp

Google G Go

Bookmarks No popups Check AutoLink AutoFill Send to

Gmail - Inbox (167) Butte County Economic Deve... Butte County - Photos



Butte County General Plan/Zoning Ordinance Update Website

[General Plan Homepage](#)

[Development](#)

Butte County General Plan/Zoning Ordinance Update eBinder

This is the place where we'll keep track of ALL documents that are provided at meetings and workshops in ONE place. In case you miss a meeting or the information that was provided, you will have this ONE place where you can check FOR SURE to get the handouts/info that was provided.

- **2006-12-07** [Second Citizens Advisory Committee meeting at Butte College - Draft Agenda](#) <posted 2006-11-08> | [Map](#)
- **2006-11-16** [First Citizens Advisory Committee meeting at Butte College - Final Agenda](#) | [Summary Notes](#) <updated 2006-11-19> | [Map](#)
- **2006-11-13** [Email Update Sent to the General Plan Update List](#) <posted 2006-11-13>
- **2006-11-08** [County staff and DC&E toured Butte County by ground and air](#) - the goal was to acquaint the consultant team with Butte County (future meetings) <posted 2006-11-09>
- **2006-11-01** [Email Update Sent to the General Plan Update List](#)
- **2006-09-25** [Email Update Sent to the General Plan Update List](#)
- **2006-09-16** [Presentation to the League of Women Voters](#) about progress being made in the County's efforts to update its General Plan & Zoning Ordinance [file](#) - posted 2006-09-19>
- **2006-09-12** Appoint members of the public to the [General Plan Update Citizens Advisory Committee](#) | [Summary Notes of Meeting](#)
- **2006-09-12** Board of Supervisors Meeting - [Contract with DC&E](#) to coordinate the General Plan Update/new Zoning Ordinance/EIR | [Summary Notes](#)
- **2006-09-12** A request for Board direction regarding a longstanding issue with [Program 2.2 of the Agriculture Element of the General Plan](#) (setback apply)
- **2006-09-10** [Email Update Sent to the General Plan Update List](#)
- **2006-08-01** [Board of Supervisors Letter of Support for the General Plan Update](#) <posted 2006-08-02>
- **2006-07-25** [Board of Supervisors approved DRAFT Guiding Principles](#) <posted 2006-07-25>
- **2006-07-25** [Revised DRAFT Framework of Guiding Principles](#) Board of Supervisors Staff Report <posted 2006-07-19>

BEFORE talking about the General Plan and our process...

- A Few Definitions
- Roles
- Website and Use of Technology
- Clearly DEFINE Success

What is a General Plan Update?

- The Public, Citizens Advisory Committee, Technical Experts, County Staff, Cities/Town, Special Districts & DC&E working together to develop a comprehensive & consistent plan for the Board of Supervisors to approve that provides a clear path for the future of Butte County.

What's Next?

- 12-07-06 Citizens Advisory Committee Meeting
- 01-27-07 County/City Summit
- 03-07 Workshop Series #1 starts – Background & Issues
- City/County individual meetings continue to address Sphere issues
- 09-09 Complete Project

Butte County

General Plan and Zoning Ordinance Update



"Charting the Course" 2030 Plan



Questions?

Questions?

Questions?

Questions?

