

BUTTE COUNTY GENERAL PLAN 2030

City and County Summit



Butte County | January 27, 2007



OVERVIEW OF PRESENTATION

- ◆ Introduction of Consultant Team
- ◆ The Purpose of the Butte County General Plan
- ◆ Overview of the General Plan 2030 process
- ◆ Citizens Advisory Committee
- ◆ Project Status
- ◆ City/Town and County Coordination
- ◆ Next Steps



Butte County

Tim Snellings, Development Services Director
Dan Breedon, Project Manager
Chuck Thistlethwaite, Pete Calarco, Noel Carvalho

DESIGN, COMMUNITY & ENVIRONMENT

Project Management; General Plan, Community Outreach, Environmental Review

David Early, AICP, Principal, Lead Facilitator
Catherine Reilly, Senior Associate-in-Charge
Michael Brilliot, Associate, Project Manager

Crawford, Multari & Clark
Associates
Zoning Ordinance
Paul Crawford, Principal

Fehr & Peers Associates
Circulation and Transportation
Jeff Clark, Senior Associate

Jones & Stokes Associates
*Biology, Cultural Resources,
Air Quality, Noise*
Maggie Townsley,
Project Director

Bay Area Economics
Economic and Fiscal Analysis
Matt Kowta, Principal

Questa Engineering
*Infrastructure, Geology,
Hydrology, Hazards*
Norm Hantzche,
Managing Engineer



PURPOSE OF THE BUTTE COUNTY GENERAL PLAN

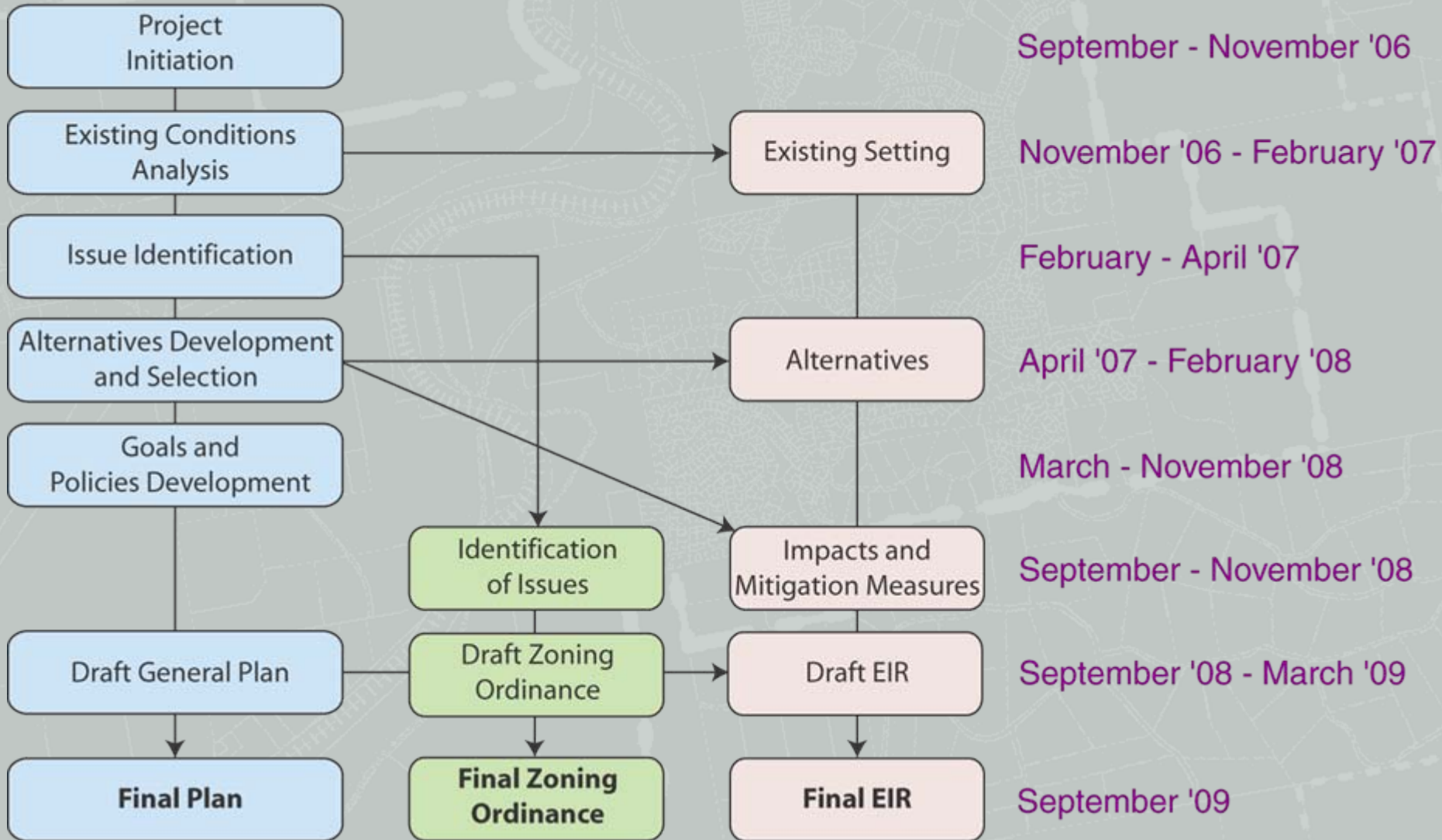
- ◆ Constitution for growth and development in unincorporated areas
- ◆ Clarify vision and goals
- ◆ Define a consistent direction for future development
- ◆ Balance growth, conservation and quality of life
- ◆ Document baseline environmental conditions



GENERAL PLAN

ZONING CODE

EIR



KEY PUBLIC INPUT OPPORTUNITIES

- ◆ City/County Summit
- ◆ Meeting Series - *8 Series Total*
- ◆ Geographic Subarea Meetings – *3 Total*
- ◆ Planning Area Meetings – *5 Total*
- ◆ Additional Planning Commission/Board of Supervisors Study Sessions – *Up to 7 Each*
- ◆ Planning Commission/Board of Supervisor Review and Adoption Hearings – *4 Hearings Each*



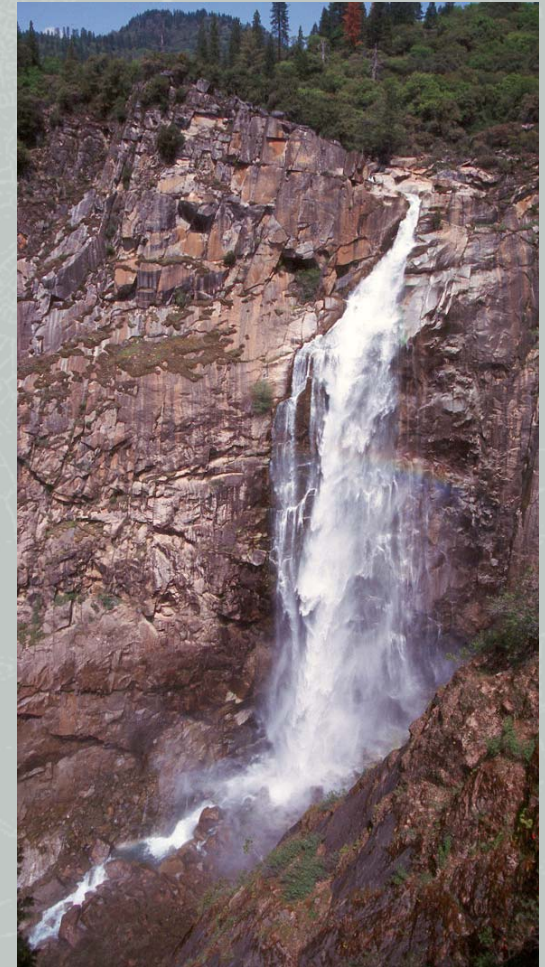
MEETING SERIES ORGANIZATION

- ◆ Community Workshop
- ◆ Citizens Advisory Committee Meeting
- ◆ Planning Commission Study Session
- ◆ Board of Supervisors Study Session

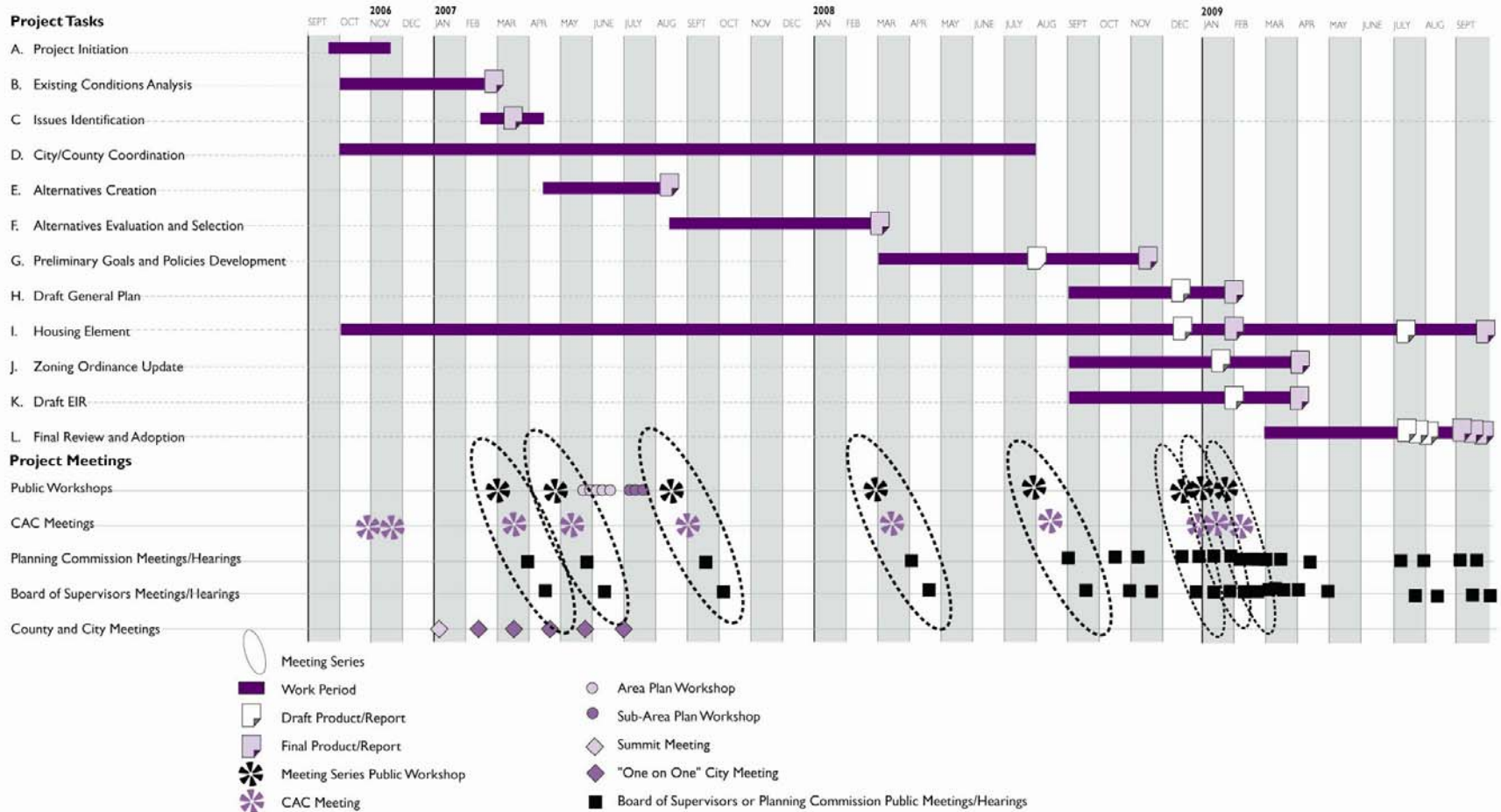


MEETING SERIES TOPICS

1. Issue Identification
2. Development of Alternatives
3. Alternatives Finalization
4. Alternatives Evaluation and Selection
5. Goals and Policies Development
6. Draft General Plan
7. Housing Element
8. Zoning Code Issue Identification



PROJECT SCHEDULE



CITIZENS ADVISORY COMMITTEE

- ◆ Represents the community during the General Plan 2030 process
- ◆ Provides input to the Planning Commission and Board of Supervisors
- ◆ Reviews working documents
- ◆ Acts as a “sounding board”
- ◆ Builds community interest and support for the General Plan



PROJECT STATUS

- ◆ Held two Citizens Advisory Committee kick-off meetings
- ◆ Existing conditions analysis underway
- ◆ City/Town and County coordination underway



CITY/TOWN AND COUNTY COORDINATION

- ◆ City and County Summit
 - Coordinate various general plan processes
 - Identify common concerns
- ◆ Individual County and City/Town meetings
 - Address common issues facing the County and the Cities/Towns



NEXT STEPS

- ◆ Follow up Meetings with Individual Cities/Towns
- ◆ Meeting series #1 – Issue Identification
 - Public Workshop: March 15, 2007, Southside Community Center
 - Citizens Advisory Committee meeting: March 29, 2007, Butte College
 - Planning Commission Study Session
 - Board of Supervisors Study Session



NEXT STEPS

- ◆ Existing Conditions Report
- ◆ Briefing Book



BUTTE COUNTY GENERAL PLAN 2030

City and County Summit



Butte County | January 27, 2007

