

**Butte County General Plan 2030
Competition – County vs. Cities vs. BCAG vs. LAFCO
Why We Can't Work Together!!!...**

**CALAFCO Annual Meeting
August 29, 1007**

**Tim Snellings, Director
Butte County Department of
Development Services**

Why Plan?



“As clearly and objectively as we think we see things, we begin to realize others see them differently from their own apparently equally clear and objective point of view.”

Stephen Covey

Who is 'We'?

- Butte County
- Cities of Biggs, Chico, Gridley, Oroville, Paradise
- Butte County Association of Governments (BCAG)...our COG
- LAFCO
- Special Districts (41)

Unique Opportunity

- Butte County General Plan 2030
- Cities of Oroville, Chico, Gridley underway with General Plan Updates
- Biggs and Paradise to follow soon
- NCCP/HCP by BCAG
- MSRs by cities/districts
- SOIs reviews

Why Some Say 'We CAN'T Work Together'...

- We have too many things that we disagree about
- Chico doesn't like the County and the County doesn't like Chico
- Biggs, Gridley and the County can't work together – too many conflicts of interest
- Paradise's plans for growth are too big
- Oroville's sphere is too large
- Chico's sphere is too small

Why Some Say 'We CAN'T Work Together'...

- Cities should concentrate on infill development, not greenfield development
- County should provide all of the open space/habitat/Ag
- There's just too much bad history between cities/town and the County
- Cooperation is bad
- Etc., Etc., Etc.

...In Fact

- We need each other
- We want to be a part of something bigger than ourselves
- We want to be proactive
- We want to create something special for future generations
- The reasons why we can't, are in fact the reasons why we **MUST** work together

"If a man does his best,
what else is there?"

General George S. Patton (1885-1945)

Butte County

Tim Snellings, Development Services Director
Dan Breedon, Project Manager
Pete Calarco, Chuck Thistlethwaite, Noel Carvalho

DESIGN, COMMUNITY & ENVIRONMENT

Project Management: General Plan, Community Outreach, Environmental Review

David Early, AICP, Principal, Lead Facilitator
Joanna Jansen, Senior Associate-in-Charge
Tanya Sundberg, Associate, Project Manager

Crawford, Multari &
Clark Associates

Zoning Ordinance

Paul Crawford, Principal

Fehr & Peers
Associates

*Circulation and
Transportation*

Jeff Clark, Senior Associate

Jones & Stokes
Associates

*Biology, Cultural Resources,
Air Quality, Noise*

Maggie Townsley,
Project Director

Bay Area Economics

*Economic and Fiscal
Analysis*

Matt Kowta, Principal

Questa Engineering

*Infrastructure, Geology,
Hydrology, Hazards*

Norm Hantzche,
Managing Engineer

Gallaway Consulting

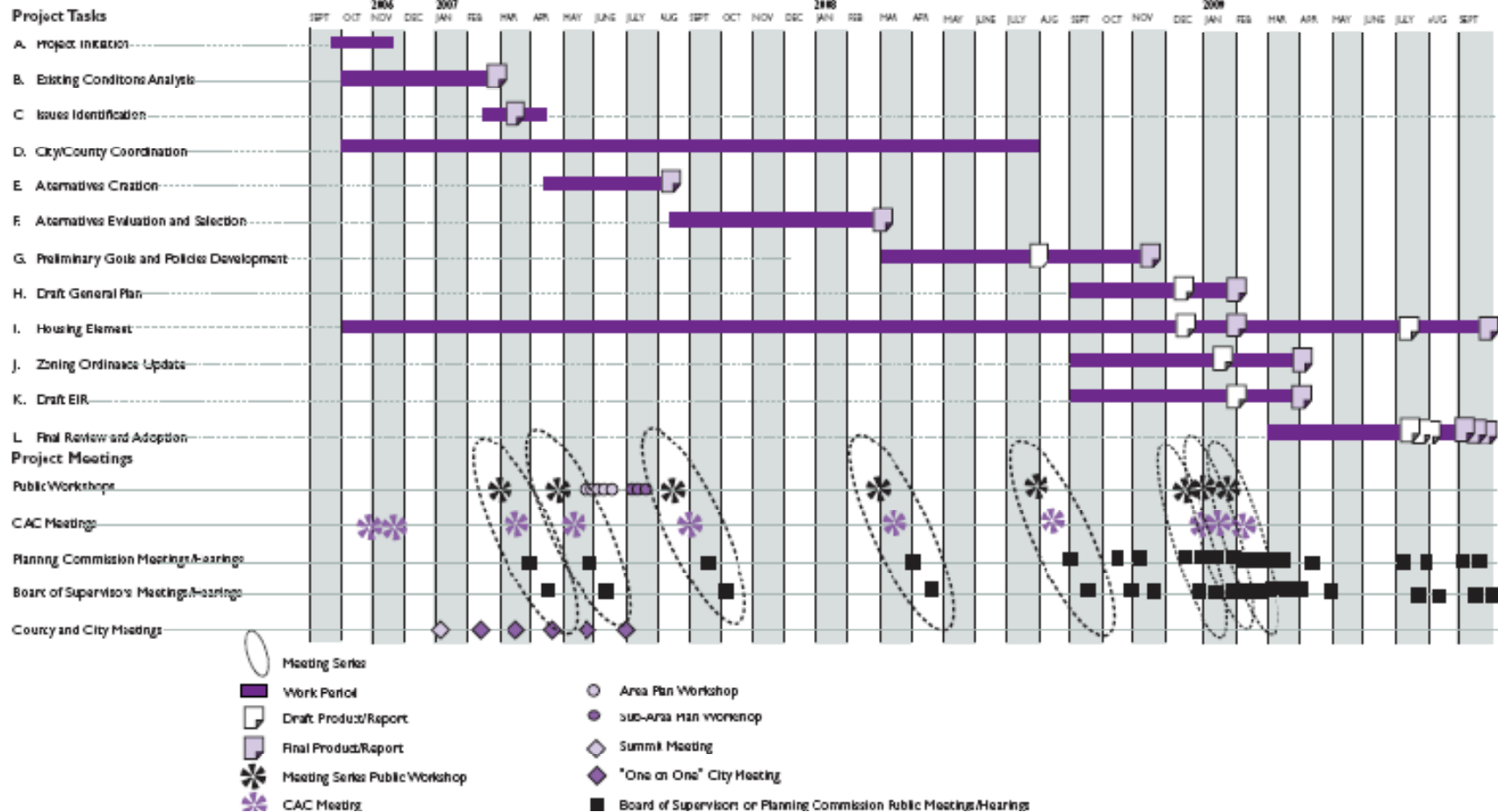
Migratory Deer Range

Jody Gallaway,
President and Wildlife
Biologist

Butte County General Plan 2030 Project Schedule

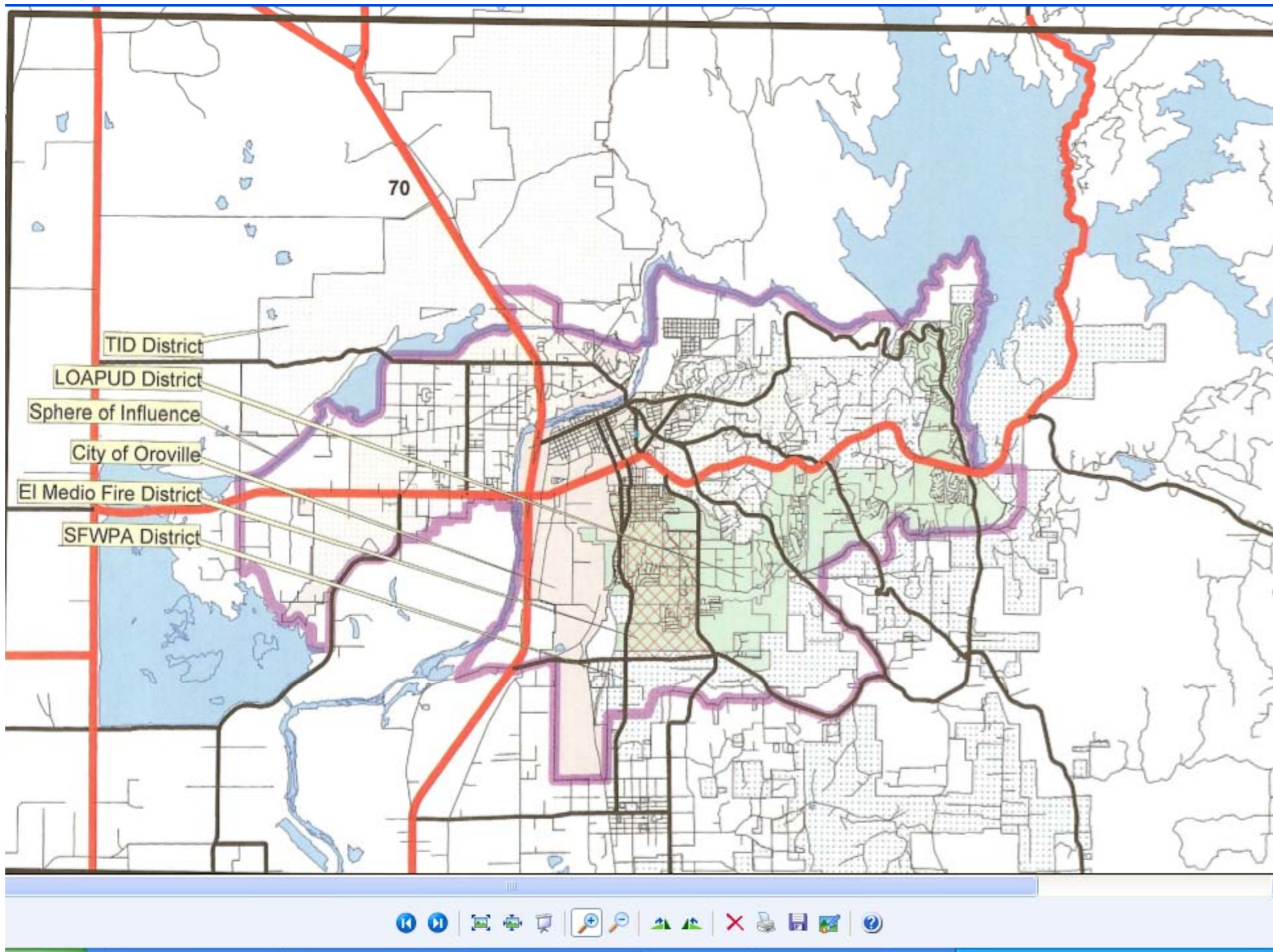
BUTTE COUNTY
GENERAL PLAN UPDATE, ZONING ORDINANCE UPDATE AND EIR

PROJECT SCHEDULE
FIGURE 1

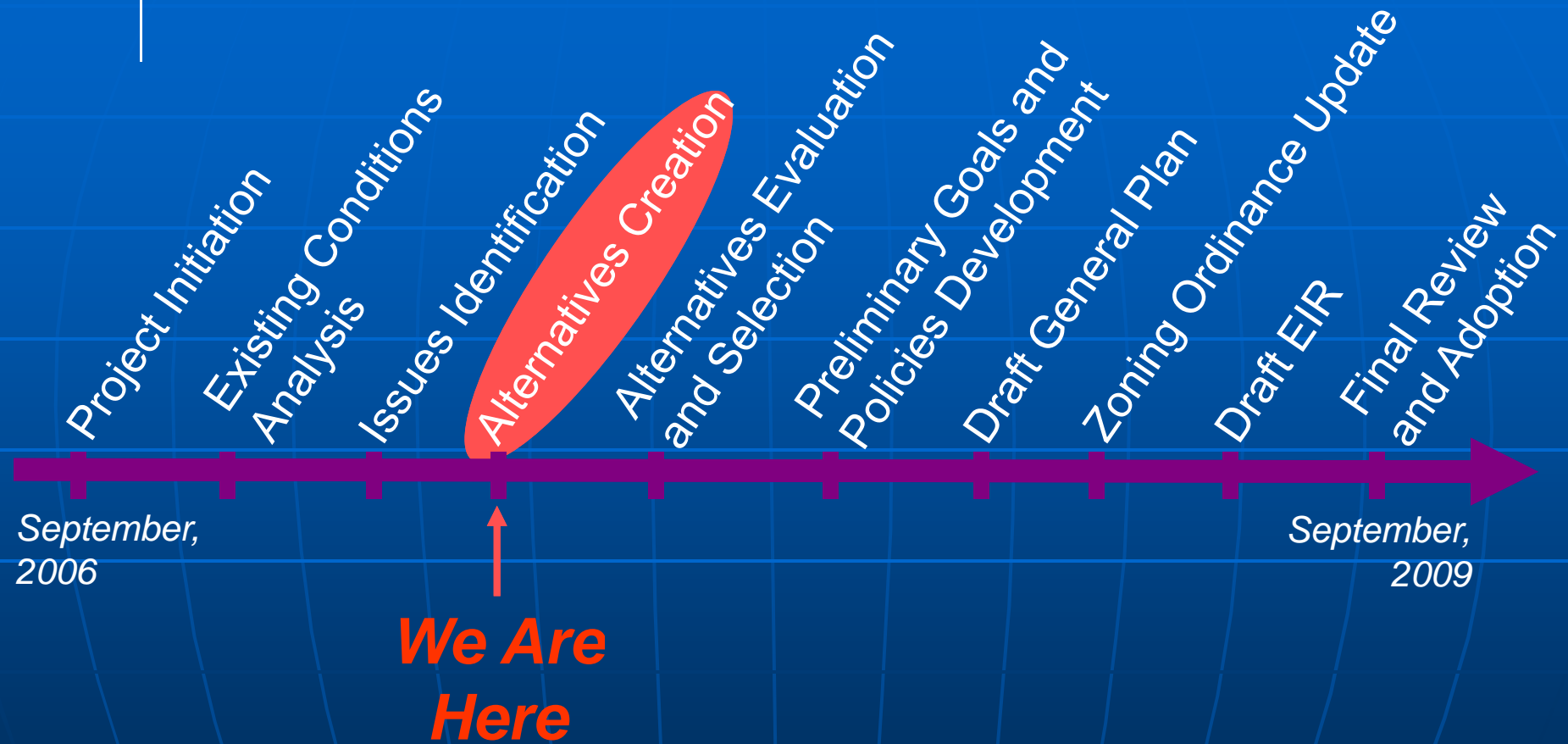


13 Guiding Principle Topics

1. Cooperative Planning
2. Circulation
3. Growth/Urban Development/Housing
4. Airport Land Use Planning
5. Natural Resources and Environment
6. Public Health and Safety
7. Economic Development
8. Agriculture
9. Rural Development
10. Recreational Opportunities and
Protection of Cultural Resources
11. Sustainability
12. Public Services
13. Water Resources



WHERE ARE WE TODAY?



How Are We Doing?

- Historic Summit held Jan 2007
- 5 one on one meetings with cities...follow up in process
- Bi-monthly city/county/LAFCO/BCAG
- Upcoming City Council updates

Key Issues to Deal With

- Getting real with Revenue Sharing
- We will either partner with the cities or we will compete with them
- The answer to this will shape Butte County General Plan 2030

COUNTYWIDE SERVICES PROVIDED BY BUTTE COUNTY

SHERIFF:

Coroner
County Jail
Search & Rescue Services

WELFARE:

Employment and Financial Assistance
Child Protective Services
Adult Protective Services
Food Stamps
Medi-Cal
In-Home Supportive Services
Adoption Assistance
Public Guardian/Public Administrator

DISTRICT ATTORNEY:

Attorneys & Prosecutors
Prosecution of criminal violations of State and local law
Criminal Child Support Investigations
Child Abduction
Welfare Fraud

AGRICULTURE DEPARTMENT:

Agricultural Law and Regulatory Enforcement
Weights & Measures Enforcement
Predatory Animal Control
Pesticide Use Regulation
Agricultural Pest Trapping/Eradication

BEHAVIORAL HEALTH:

Alcohol & Drug Abuse Program
Mental Health Services for Medi-Cal recipients
Youth Development Programs
School Based Services
Prevention Programs
Homeless Assistance
Senior Citizens Services

PUBLIC HEALTH:

WIC food voucher and nutrition education
Environmental Health & Management
Hazardous Materials Monitoring
Clinics (well baby, pregnancy, etc)
Health Education Programs
Birth Records

COUNTY ADMINISTRATIVE OFFICE:

Emergency & Disaster Management
Economic Development

FARM HOME & 4H ADVISOR:

Coordinate 4H Program
Provide Advice To Farmers and Gardeners

COUNTY CLERK/RECORDER:

General and Special Elections
Marriage Licenses
Death Records
Passport Applications
Voter Registration
Recording of Official Records
(land records, deeds, liens, etc)

PUBLIC WORKS DEPARTMENT:

Butte County Transit
Neal Road Landfill
Recycling Information
Household Hazardous Waste Facility

LIBRARIES:

Six Library Branches
Library Literacy Program
Bookmobile

ASSESSOR/AUDITOR/TREASURER:

Property Tax Calculation/Collection/Distribution
RDA Tax Increment Calculation/Collection/
Distribution

VETERANS SERVICES:

Benefit Assistance
Veteran Memorial Halls

PUBLIC DEFENDER:

Legal Assistance to Indigent Citizens

WATER & RESOURCE CONSERVATION:

Manages and Conserves Water and Other
Resources for All Butte County Citizens

TREASURER - TAX COLLECTOR:

Safekeeping & Investment of Public Funds

PROBATION:

Probation-Parole
Juvenile Hall
Juvenile Hall Day School
Victim Witness Assistance
Youth Authority Placement payments

FIRE:

Fire Suppression & Control
First Response To Medical Emergencies

CHILD SUPPORTIVE SERVICES:

Enforcement/Collection of Child Support Payments



Butte County General Plan 2030

[General Plan Homepage](#)

[Development Services Homepage](#)

Products To Date Meetings Helpful Information Contact Us Search

- Background Information
- Calendar
- Citizens Advisory Committee
- eBinder
- FAQs
- Glossary of Terms
- Links
- Search
- Video Library

[Online Discussion Forum](#)


[Butte Photos](#)

Quick Facts

- Area under county


Welcome to the Butte County General Plan 2030 Website (Last Update: 2007-08-24)


Announcements

 [Setting and Trends Report](#) released August 02, 2007 - An excellent resource that has been worked on for the past 11 months that provides a great deal of information for Butte County General Plan 2030. CDs are available upon request. Please email dbreedon@buttecounty.net for one today.

People might wonder, 'what is staff up to? we haven't seen anything produced recently.' With this thought in mind, you can visit our new [GP2030 Journal](#) to discover the latest staff and consultant team efforts...and get a sense of 'what's next'.

SAVE THE DATE: On Monday, October 15, 2007, Butte County will sponsor the 2007 Economic Summit. A comprehensive agenda is being drafted. Mark your calendar now. [More info HERE - Please Pre-Register NOW](#)...DDS Staff

 Butte NCCP/HCP Workshops - This is an opportunity to learn more about the Habitat Conservation Planning process and how that process can compliment our own General Plan 2030 process. [Sept. 5th and 12th...more info](#)

- 2007-03-29 [Biggs City/Butte County One on One Meeting Notes](#) <posted 2007-08-20> 
- 2007-03-15 [Golden City/Butte County One on One Meeting Notes](#) Golden City

CAC Meetings

[Meeting Series #2/3-2C](#)
(Finalization of Alternatives) with the Citizens Advisory Committee continues on 2007-09-06 - [Agenda](#)

[Meeting Series #2/3-2B](#)
Citizens Advisory Committee meeting of 2007-08-02

For background on the Project Meeting Series, please view [the details here](#)

View our meeting history and [summaries in our eBinder](#)

Keep apprised of all local Planning Meetings, including the cities at buttecalendar.net