

Butte County General Plan 2030



2008 Public Works Spring Conference
April 9, 2008

Dan Breedon, AICP, Principal Planner
Butte County Department of Development Services

Photo: Seasonal waterfall off North Table Mountain, April 2006

Butte County's General Plan 2030 Project

- When you hear the phrase, *Butte County General Plan 2030*, we want you to know that this means the complete 3 fold project which is:
 - A comprehensive update to the General Plan,
 - A completely new Zoning Ordinance, and,
 - The Environmental Impact Report (EIR) to support both projects.

Important Butte County GP 2030 Milestones

- 2007-01-27 City/County Summit Workbook
- 2007-02-13 Guiding Principles
- 2007-03-15 GP 2030 Briefing Book
- 2007-05-21 Key Issues Summary
- 2007-08-02 Setting and Trends Report
- 2007-11-27 Final Land Use, Policy & Transportation Alternatives
- 2008-04-14 Alternatives Evaluation Report

Butte County

Tim Snellings, Development Services Director
Dan Breedon, Project Manager
Pete Calarco, Chuck Thistlethwaite, Claudia Stuart

DESIGN, COMMUNITY & ENVIRONMENT

Project Management; General Plan, Community Outreach, Environmental Review

David Early, AICP, Principal, Lead Facilitator
Joanna Jansen, Senior Associate
Tanya Sundberg, Associate Planner
Lisa Katz, Planner

Crawford, Multari &
Clark Associates

Zoning Ordinance

Paul Crawford, Principal

Fehr & Peers
Associates

*Circulation and
Transportation*

Jeff Clark, Senior Associate

Jones & Stokes
Associates

*Biology, Cultural Resources,
Air Quality, Noise*

Maggie Townsley,
Project Director

Bay Area Economics

*Economic and Fiscal
Analysis*

Matt Kowta, Principal

Questa Engineering

*Infrastructure, Geology,
Hydrology, Hazards*

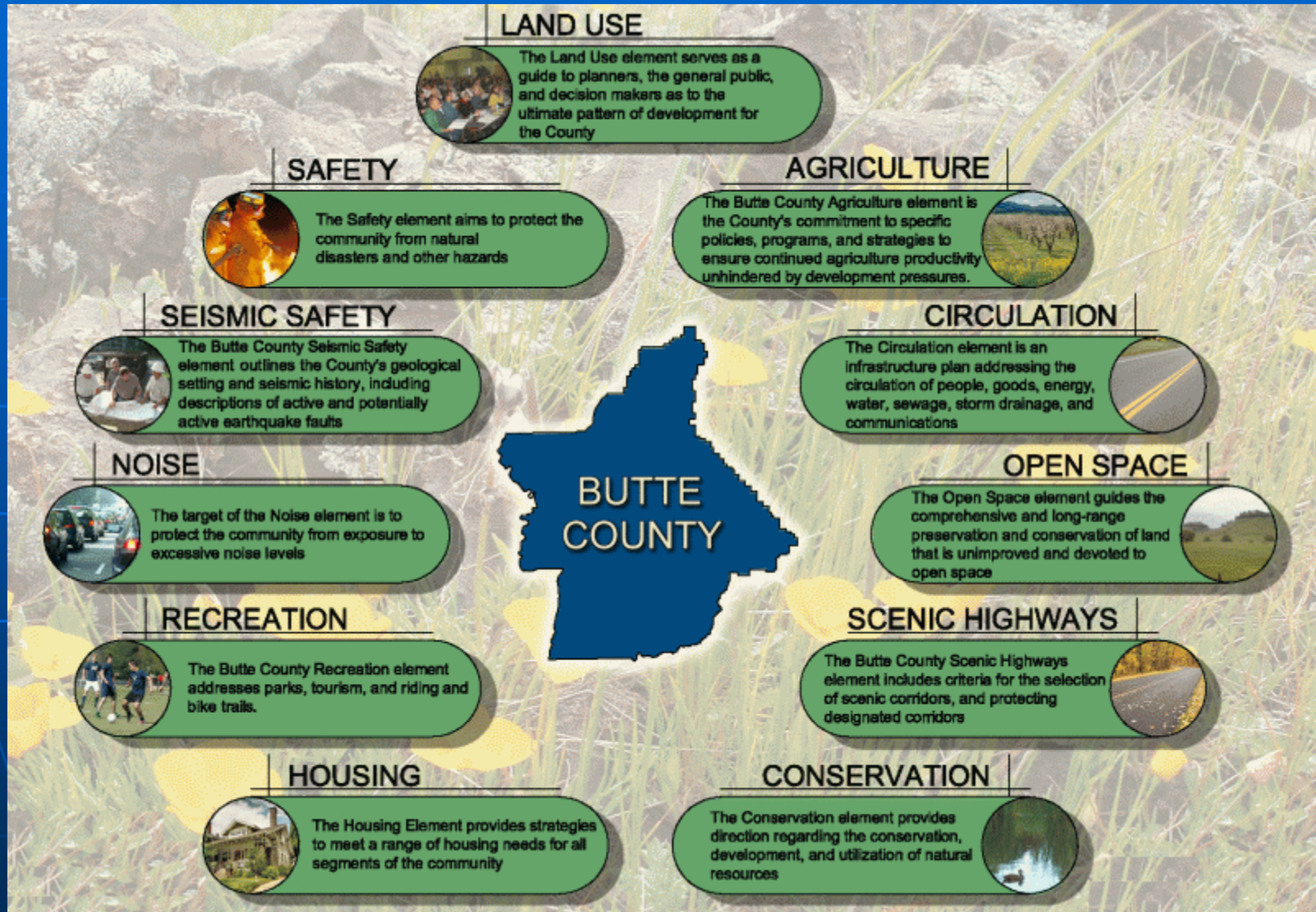
Norm Hantzche,
Managing Engineer

Gallaway Consulting

Migratory Deer Range

Jody Gallaway,
President and Wildlife
Biologist

Butte County's Current General Plan – Elements (Chapters)



Butte County General Plan Elements (Chapters)

Required Elements:

- Land Use, 1979
- Circulation, 1984
- Housing, 2004
- Conservation, 1971
- Open Space, 1976
- Safety, 1977
- Noise, 1977

Existing Optional Elements:

- Scenic Highway Element, 1977
- Seismic Safety, 1977
- Recreation, 1971
- Agriculture, 1995

Butte County Association of Governments Growth Projections Population

Jurisdiction	Total Increase 2006-2030	Percent Increase 2006- 2030	Average Annual Growth Rate
Biggs	2,217	125%	5.2%
Chico	48,121	61%	2.5%
Gridley	7,221	121%	5.1%
Oroville	15,032	111%	4.6%
Paradise	7,151	27%	1.1%
Unincorporated	24,364	27%	1.1%
Total County	104,106	48%	2.0%

Butte County Association of Governments Growth Projections Housing Units

Jurisdiction	Total Increase 2006-2030	Percent Increase 2006-2030	Average Annual Growth Rate
Biggs	775	125%	5.2%
Chico	19,996	61%	2.5%
Gridley	2,699	121%	5.1%
Oroville	6,418	111%	4.6%
Paradise	3,427	27%	1.1%
Unincorporated	10,568	27%	1.1%
Total County	43,883	47%	2.0%

Citizens Advisory Committee

- Citizens Advisory Committee (CAC) on May 23, 2006 the Board of Supervisors passed Resolution 06-085 approving the creation of a Citizens Advisory Committee for the General Plan Update
- 35 members from a variety of backgrounds and areas



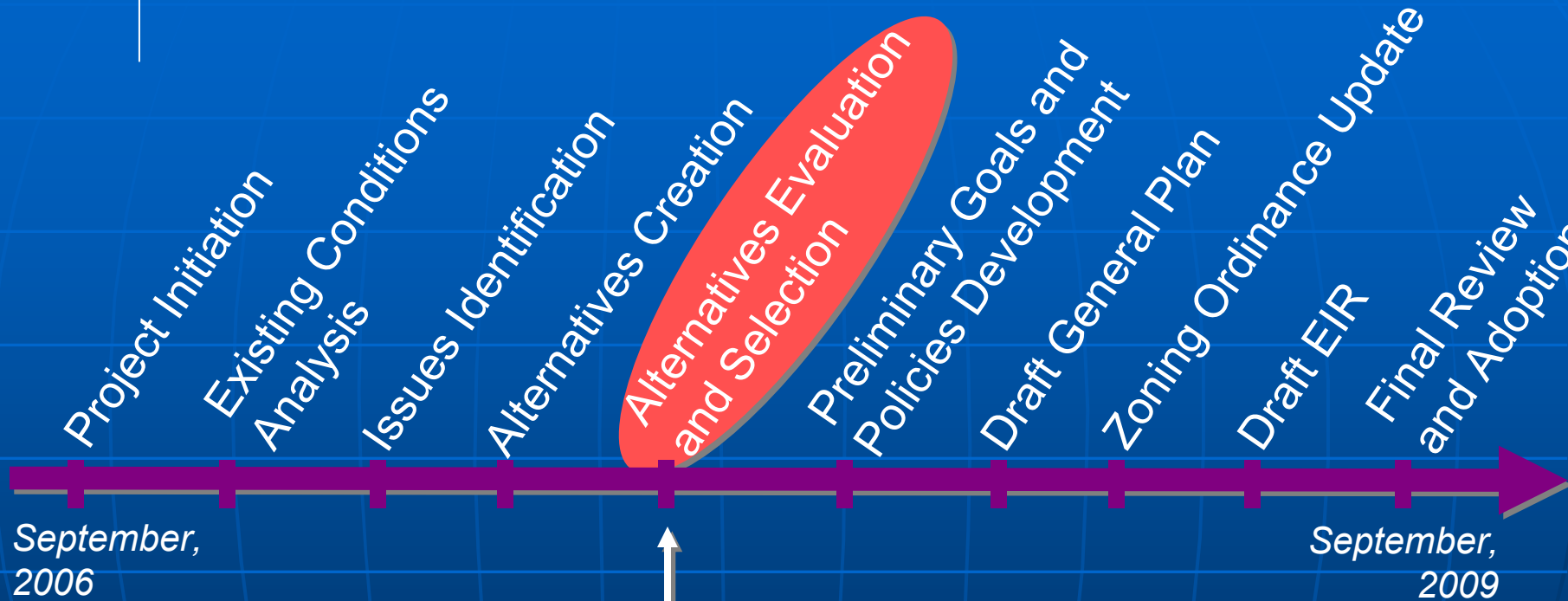
Butte County General Plan 2030 Road Show

- 12 Community Level Meetings – Cherokee, Cohasset, Concow/Yankee Hill/Jarbo Gap, Feather Falls/Forbestown/Clipper Mills, Forest Ranch, Nord, Palermo/Honcut, Berry Creek/Brush Creek, Richvale, Stirling City, Bangor/Rackerby, Butte Meadows/Jonesville

Butte County General Plan 2030 Road Show

- Community Meetings
 - 7 “Area-Wide” Meetings (Central Buttes, Durham, Dayton & Nelson, Unincorporated Gridley/Biggs, Unincorporated Paradise, Unincorporated Chico, Unincorporated Oroville, Lake Oroville Area)
 - 1 “Economic Summit” to focused on Butte County’s Economy (Held October 15, 2007)

WHERE ARE WE TODAY?



We Are Here

**(Meeting Series #4 Public Workshop Held
March 27, 2008, 5:00 pm Little Chico Creek
Elementary School)**

Process. . .

- 8 “Meeting Series” each consisting of:
 - A Public Workshop
 - A Citizens Advisory Committee Meeting
 - A Planning Commission Study Session
 - A Board of Supervisor Study Session

(Used to provide input, guide process, review work and ultimately adoption of work by Butte County Board of Supervisors)

Important Butte County GP 2030 Work Products so far

- 2007-01-27 City/County Summit Workbook
- 2007-02-13 Guiding Principles
- 2007-03-15 GP 2030 Briefing Book
- 2007-05-21 Key Issues Summary
- 2007-08-02 Setting and Trends Report
- 2007-11-27 Final Land Use, Policy &
Transportation Alternatives

13 Guiding Principle Topics

1. Cooperative Planning
2. Circulation
3. Growth/Urban Development/Housing
4. Airport Land Use Planning
5. Natural Resources and Environment
6. Public Health and Safety
7. Economic Development
8. Agriculture
9. Rural Development
10. Recreational Opportunities and Protection of Cultural Resources
11. Sustainability
12. Public Services
13. Water Resources

Important Butte County GP 2030 Work Products

- 2007-01-27 City/County Summit Workbook
- 2007-02-13 Guiding Principles
- 2007-03-15 GP 2030 Briefing Book
- 2007-05-21 Key Issues Summary
- 2007-08-02 Setting and Trends Report
- 2007-11-27 Final Land Use, Policy & Transportation Alternatives

Butte County General Plan

Setting & Trends Report Public Draft

August 2, 2007



www.buttegeneralplan.net

Setting and Trends Report

- As the name implies: Describes Butte County's existing setting and growth trends
- 19 Chapters, 1000+ Pages
- Available on the General Plan website, County Libraries, Development Services Department, a free CD is available upon request to dbreedon@buttecounty.net

Setting and Trends Report Chapters

- Land Use
- Development Trends
- Population
- Economics
- Transportation & Circulation
- Public Facilities & Utilities
- Public Services
- Recreation
- Cultural Resources
- Visual Resources
- Mineral Resources
- Water Resources
- Biological Resources
- Agricultural Resources
- Energy
- Air Quality
- Hazards and Safety
- Noise
- Community Outreach and Meetings

Important Butte County GP 2030 Work Products

- 2007-01-27 City/County Summit Workbook
- 2007-02-13 Guiding Principles
- 2007-03-15 GP 2030 Briefing Book
- 2007-05-21 Key Issues Summary
- 2007-08-02 Setting and Trends Report
- 2007-11-27 Final Land Use, Policy & Transportation Alternatives
- 2008-04-14 Alternatives Evaluation Report

Alternative 1: Existing General Plan or Character

This Alternative provides for minimal change in land use and intensity. This Alternative retains the existing General Plan's land use designations.

Alternative 2: Concentrated Growth

In this Alternative, development is directed toward the existing urban areas.

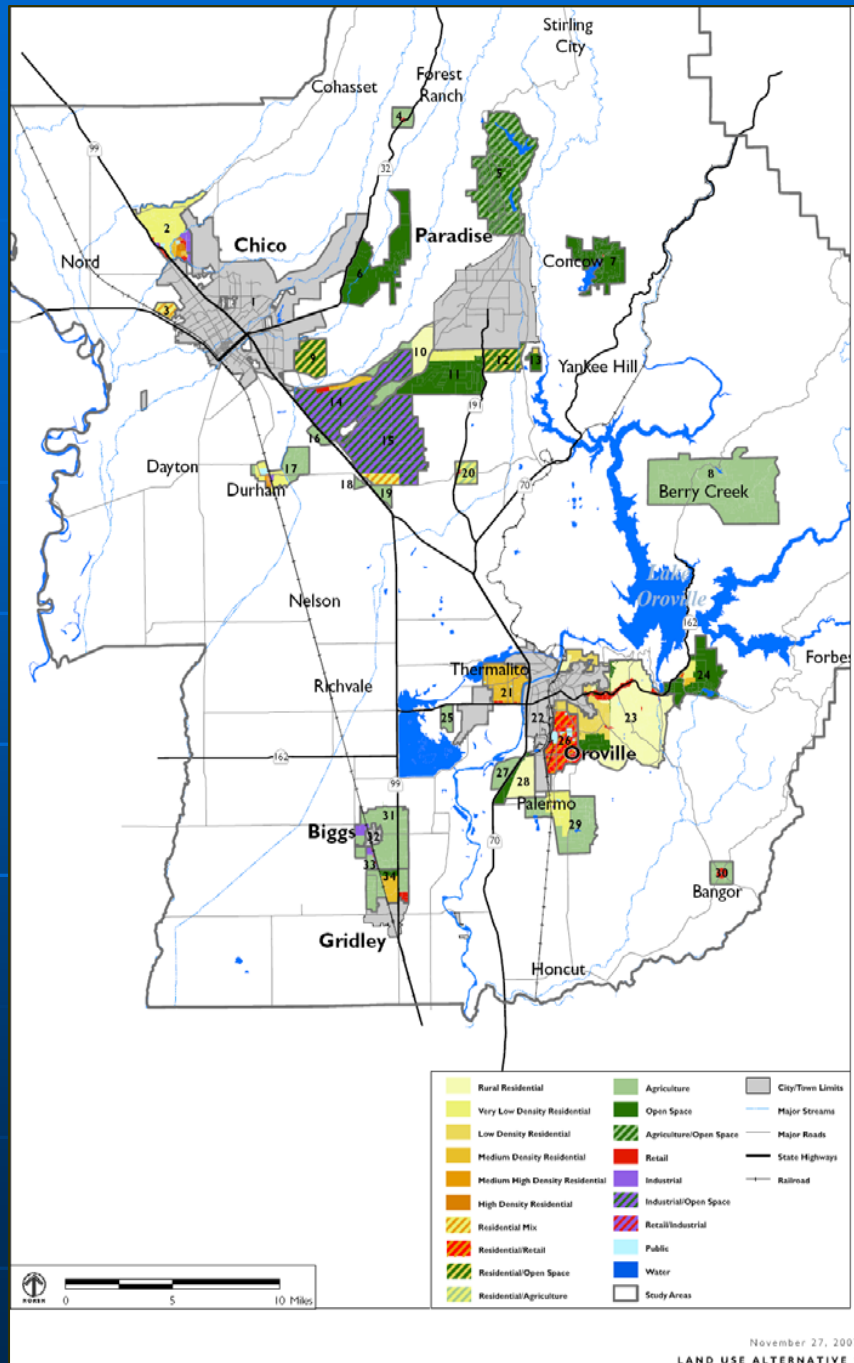
Alternative 3: Rural Extension

In this Alternative, development is distributed more widely throughout the county with less emphasis on the existing urban areas.

Land Use, Policy & Transportation Alternatives

- Reviewed by the public, Citizens Advisory Committee, Planning Commission over a half year period
- Approved by the Board of Supervisors on November 27, 2007
- Include 34 Study Areas each with 3 alternative land use scenarios
- Includes Policy Alternatives Document that provides 14 topic areas and 27 policy questions for use in the GP process

Exhibit showing Land Use Alternative 2 and the 34 Study Areas



Land Use, Policy & Transportation Alternatives

- Alternatives Evaluation Report released on March 14, 2008
- The Alternatives Evaluation Report will form the basis for decision making throughout the next General Plan Task: Selection of a Preferred Alternative (Meeting Series #4)

Transportation Alternatives

- Includes Roadway and Bike Facility Alternatives
- Trans. Alt's approved by Board on November 27, 2008
- Will be reviewed in conjunction with Meeting Series #5 –Goals and Policy Development
- Alternatives Evaluation Report includes chapter on Trans. Alts.

Transportation Alternatives

- **Alternative 1: Existing General Plan or Character**
- This alternative maintains the existing roadway and bicycle conditions throughout the county. There would be no major roadway or bicycle improvements under this alternative.

Transportation Alternatives

Alternative 2: Concentrated Growth

Many roadways in the foothill and mountain areas would be improved specifically to improve emergency access. These roads would not be improved for general use, which could promote development in some outlying areas.

Transportation Alternatives

Alternative 3: Rural Extension

Foothill and mountain area roadways would be improved for full access serving both emergency and general uses.

ROADWAY ALTERNATIVES: FOOTHILL/MOUNTAIN ROADS

Skyway

Cohasset Road

Magalia Area:
Garland Road, Doe Mill Road, Coutolenc
Road, Jordan Hill Road

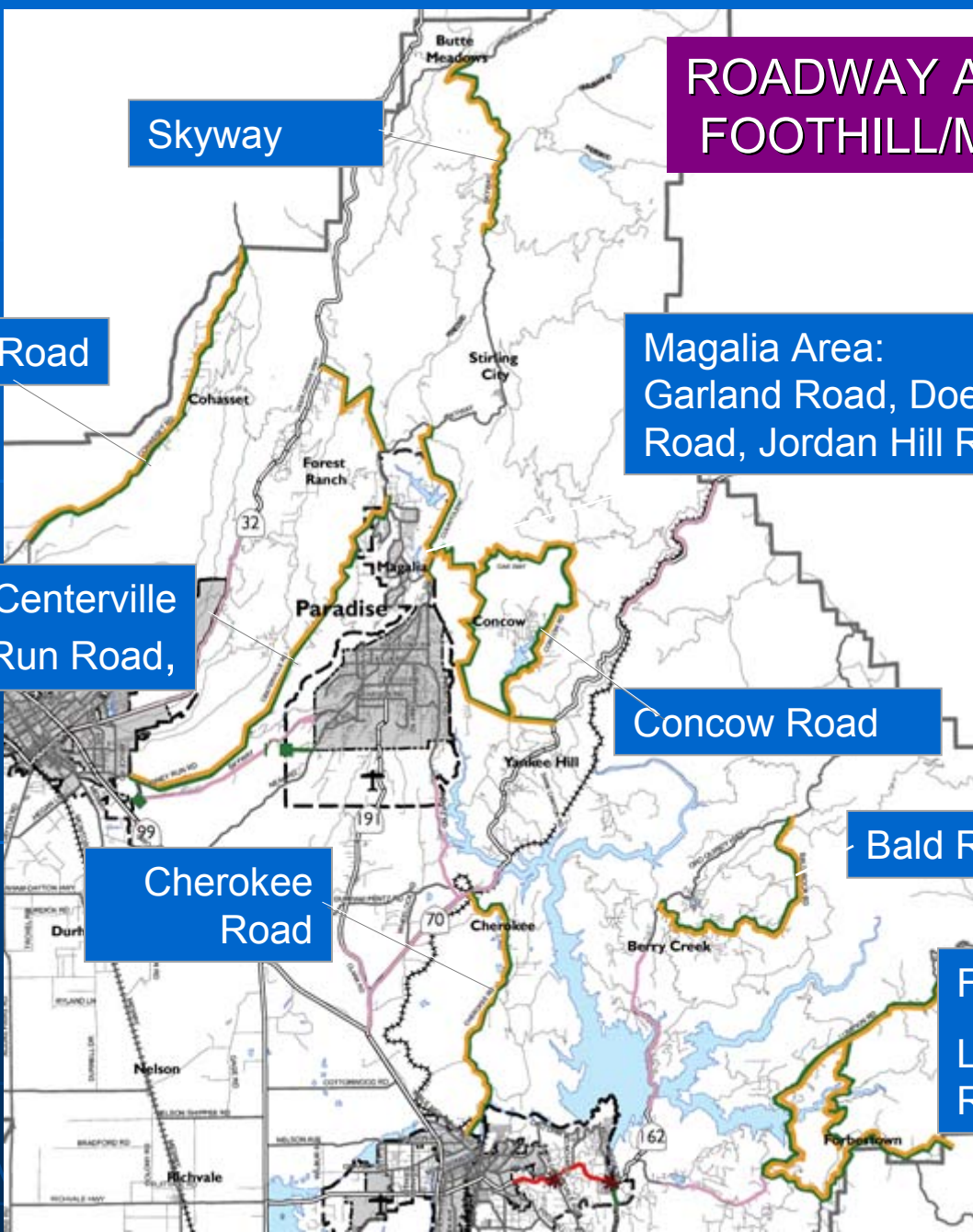
Nimshew Road, Centerville
Road, Honey Run Road,

Concow Road

Cherokee
Road

Bald Rock Road

Forbestown Area:
Lumpkin Road, Ponderosa
Road, Forbestown Road



Important Butte County GP 2030 Work Products so far

- 2007-01-27 City/County Summit Workbook
- 2007-02-13 Guiding Principles
- 2007-03-15 GP 2030 Briefing Book
- 2007-05-21 Key Issues Summary
- 2007-08-02 Setting and Trends Report
- 2007-11-27 Final Land Use, Policy &
Transportation Alternatives
- 2008-04-14 Alternatives Evaluation Report

Alternatives Evaluation Report

This extensive evaluation examines the Alternatives with respect to:

- Transportation and Circulation,
- Fiscal Impacts,
- Agricultural Impacts,
- Water Supply,
- Wastewater Infrastructure,
- Biological Resources (including the Butte Regional Conservation Plan – HCP/NCCP and Deer Range Maps)
- Cultural Resources
- Public Services (including Schools)
- Safety/Hazards

Upcoming Events –Meeting Series #4

- Citizens Advisory Committee Meetings
 - April 10 –Paradise/Magalia/Butte Valley/Concow
 - April 17 –South County
 - April 24 –North County
- Planning Commission Study Session
 - May 9, 2008
- Board Study Session
 - July 29, 2008

Other Events

- **April 14, 2008** Meeting to focus on water policy and optional General Plan elements -10:00 – Noon at Chico City Hall, Conference Room 1
- **June 5, 2008** Citizens Advisory Committee meeting to focus on General Plan organization



Butte County General Plan 2030

LOGIN

an Homepage

Development Services Ho

Completed GP 2030 Products	Meetings	Helpful Information	Contact Us	Search
----------------------------	----------	---------------------	------------	--------

Background Information

- Calendar
- Citizens Advisory Committee
- eBinder
- FAQs
- Glossary of Terms
- Links
- Search
- Video Library

Online Discussion Forum

Butte Photos

Quick Facts

Welcome to the **Butte County General Plan 2030 Website**
 (Last Update: 2008-04-07)

Announcements

[Online Discussion Forum...ENTER HERE](#)

The Public Workshop (Workshop Series Meeting #4-1) held on March 27, 2008 will be broadcast on April 7th at 7:00 pm, on Channel 11

What About Water?
 Does Butte County care about water, and how is the General Plan process addressing water-related issues? [Click here to find out](#)

[Policy Alternatives Showing Board of Supervisors Modifications made 2007-11-27 meeting](#)
 <posted 2008-03-22>



NEWSFLASH... The [Alternatives Evaluation Report](#) is NOW AVAILABLE online (CDs available next week)...736 page document packed with critical information for use in Workshop Series #4.

Meeting

[Workshop Series](#)
 Selection of Preferred Alternatives

[#4-1 - 03-27-2008](#)
 This meeting will be broadcast on Channel 11 at 7 pm on Channel 11



[Meeting Locations](#)
 Set
[#4-2A - 04-10-2008](#)
 (Agenda Posted)
[#4-2B - 04-17-2008](#)
[#4-2C - 04-24-2008](#)



Dan Breedon, Principal Planner
Butte County Department of Development
Services (DDS)

dbreedon@buttecounty.net 530-538-7629
www.buttegeneralplan.net