

# Butte County General Plan 2030

## Farm Bureau Executive Committee Meeting

Tim Snellings, Director  
Butte County Department of Development Services  
April 25, 2008  
Richvale Cafe



# Butte County's General Plan 2030 Project

- When you hear the phrase, *Butte County General Plan 2030*, we want you to know that this means the complete 3 fold project which is:
  - A comprehensive update to the General Plan,
  - A completely new Zoning Ordinance, and,
  - The Environmental Impact Report (EIR) to support both projects.

# Important Butte County GP 2030 Milestones

- 2007-01-27 City/County Summit Workbook
- 2007-02-13 Guiding Principles
- 2007-03-15 GP 2030 Briefing Book
- 2007-05-21 Key Issues Summary
- 2007-08-02 Setting and Trends Report
- 2007-11-27 Final Land Use, Policy & Transportation Alternatives
- 2008-04-14 Alternatives Evaluation Report

# Butte County General Plan Elements (Chapters)

## Required Elements:

- Land Use, 1979
- Circulation, 1984
- Housing, 2004
- Conservation, 1971
- Open Space, 1976
- Safety, 1977
- Noise, 1977

# Existing Optional Elements:

- Scenic Highway Element, 1977
- Seismic Safety, 1977
- Recreation, 1971
- Agriculture, 1995

## Butte County Association of Governments Growth Projections Population

Jurisdiction	Total Increase 2006-2030	Percent Increase 2006- 2030	Average Annual Growth Rate
Biggs	2,217	125%	5.2%
Chico	48,121	61%	2.5%
Gridley	7,221	121%	5.1%
Oroville	15,032	111%	4.6%
Paradise	7,151	27%	1.1%
Unincorporated	24,364	27%	1.1%
<b>Total County</b>	<b>104,106</b>	<b>48%</b>	<b>2.0%</b>

**Butte County Association of Governments Growth Projections  
Housing Units**

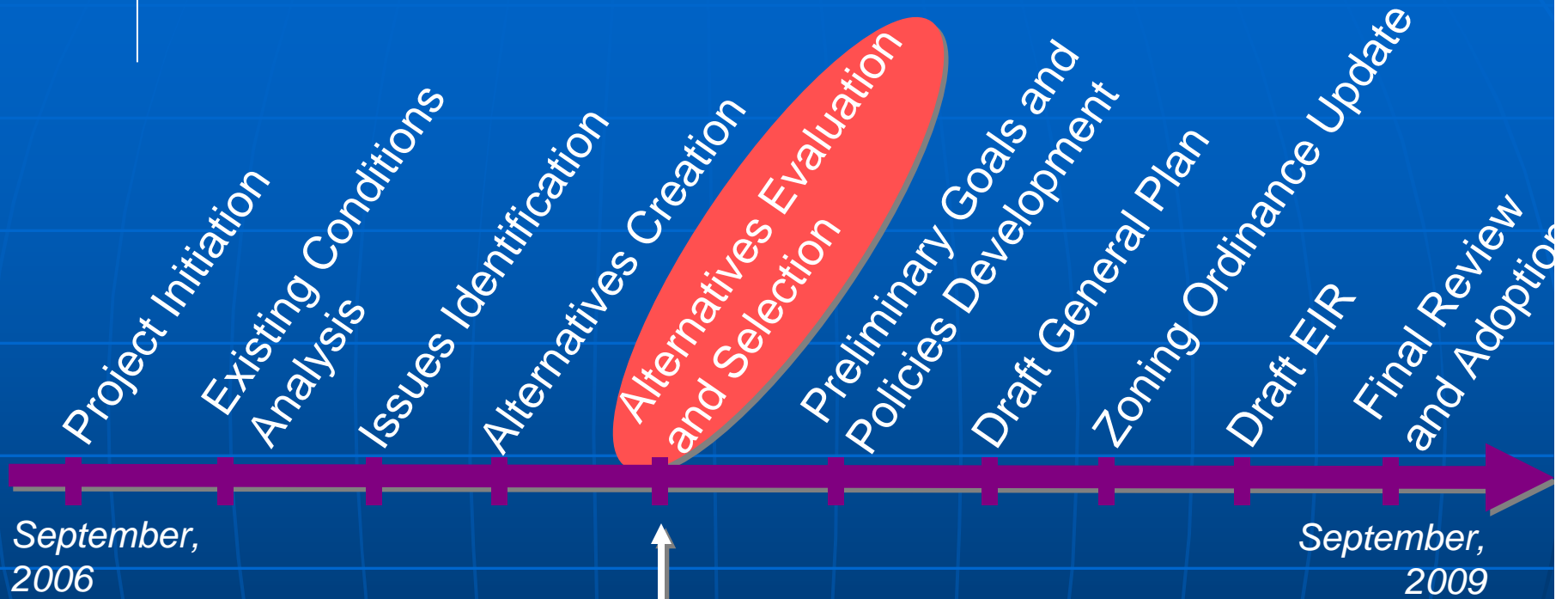
<b>Jurisdiction</b>	<b>Total Increase 2006-2030</b>	<b>Percent Increase 2006-2030</b>	<b>Average Annual Growth Rate</b>
Biggs	775	125%	5.2%
Chico	19,996	61%	2.5%
Gridley	2,699	121%	5.1%
Oroville	6,418	111%	4.6%
Paradise	3,427	27%	1.1%
Unincorporated	10,568	27%	1.1%
<b>Total County</b>	<b>43,883</b>	<b>47%</b>	<b>2.0%</b>

# Citizens Advisory Committee

- Citizens Advisory Committee (CAC) on May 23, 2006 the Board of Supervisors passed Resolution 06-085 approving the creation of a Citizens Advisory Committee for the General Plan Update
- 35 members from a variety of backgrounds and areas



## WHERE ARE WE TODAY?



**We Are Here  
(Meeting Series #4)**

# Process. . .

- 8 “Meeting Series” each consisting of:
  - A Public Workshop
  - A Citizens Advisory Committee Meeting
  - A Planning Commission Study Session
  - A Board of Supervisor Study Session

(Used to provide input, guide process, review work and ultimately adoption of work by Butte County Board of Supervisors)

# Important Butte County GP 2030 Work Products so far

- 2007-01-27 City/County Summit Workbook
- 2007-02-13 Guiding Principles
- 2007-03-15 GP 2030 Briefing Book
- 2007-05-21 Key Issues Summary
- 2007-08-02 Setting and Trends Report
- 2007-11-27 Final Land Use, Policy &  
Transportation Alternatives

# 13 Guiding Principle Topics

1. Cooperative Planning
2. Circulation
3. Growth/Urban Development/Housing
4. Airport Land Use Planning
5. Natural Resources and Environment
6. Public Health and Safety
7. Economic Development
8. Agriculture
9. Rural Development
10. Recreational Opportunities and Protection of Cultural Resources
11. Sustainability
12. Public Services
13. Water Resources

# Important Butte County GP 2030 Work Products

- 2007-01-27 City/County Summit Workbook
- 2007-02-13 Guiding Principles
- 2007-03-15 GP 2030 Briefing Book
- 2007-05-21 Key Issues Summary
- 2007-08-02 Setting and Trends Report
- 2007-11-27 Final Land Use, Policy & Transportation Alternatives

# Butte County General Plan

Setting & Trends Report Public Draft

August 2, 2007



[www.buttegeneralplan.net](http://www.buttegeneralplan.net)

# Setting and Trends Report

- As the name implies: Describes Butte County's existing setting and growth trends
- 19 Chapters, 1000+ Pages –Chapter 18 –Agriculture Preservation
- Available on the General Plan website, County Libraries, Development Services Department, a free CD is available upon request to [dbreedon@buttecounty.net](mailto:dbreedon@buttecounty.net)

# Setting and Trends Report Chapters

- Land Use
- Development Trends
- Population
- Economics
- Transportation & Circulation
- Public Facilities & Utilities
- Public Services
- Recreation
- Cultural Resources
- Visual Resources
- Mineral Resources
- Water Resources
- Biological Resources
- Agricultural Resources
- Energy
- Air Quality
- Hazards and Safety
- Noise
- Community Outreach and Meetings

# Important Butte County GP 2030 Work Products

- 2007-01-27 City/County Summit Workbook
- 2007-02-13 Guiding Principles
- 2007-03-15 GP 2030 Briefing Book
- 2007-05-21 Key Issues Summary
- 2007-08-02 Setting and Trends Report
- 2007-11-27 Final Land Use, Policy & Transportation Alternatives
- 2008-04-14 Alternatives Evaluation Report

## **Alternative 1: Existing General Plan or Character**

This Alternative provides for minimal change in land use and intensity. This Alternative retains the existing General Plan's land use designations.

## **Alternative 2: Concentrated Growth**

In this Alternative, development is directed toward the existing urban areas.

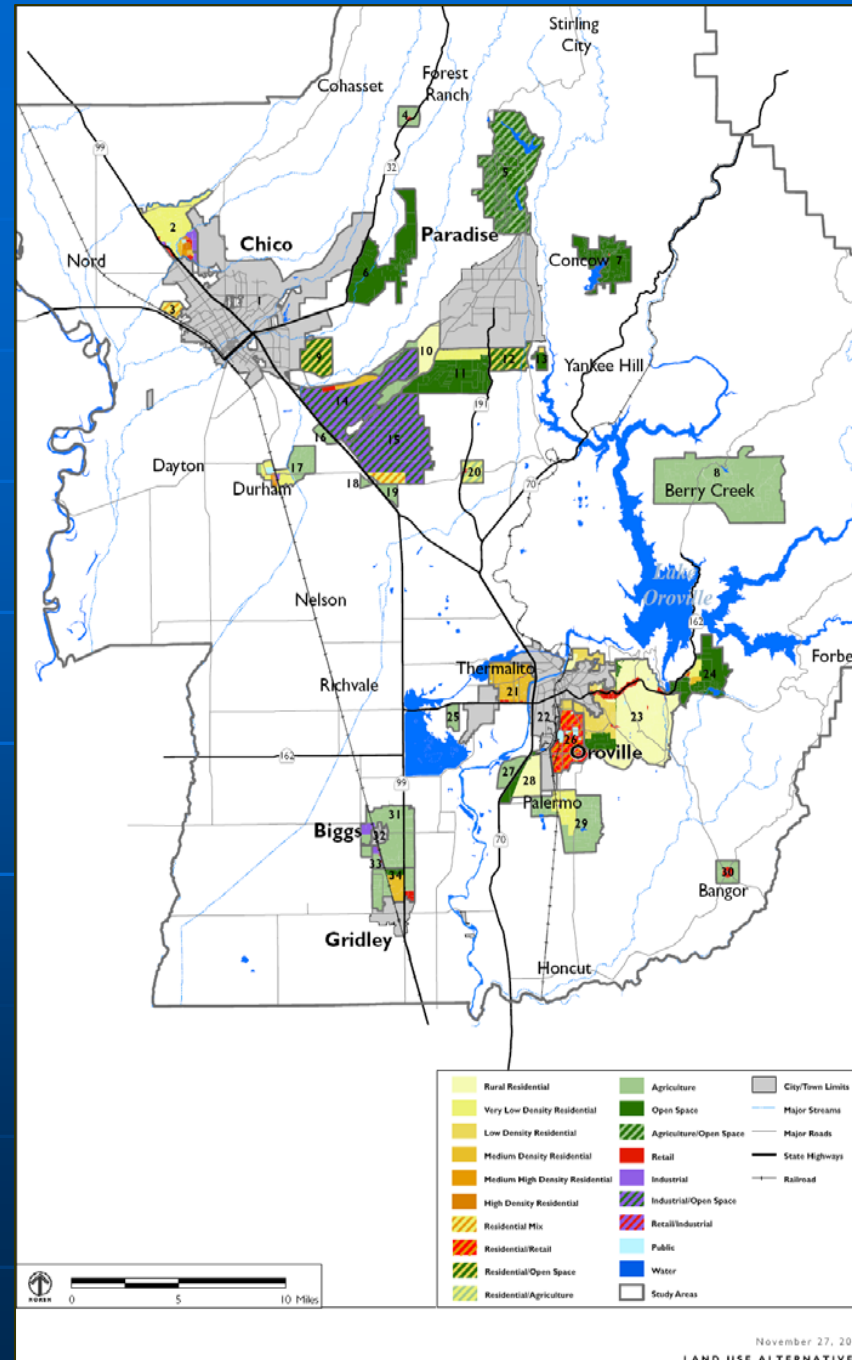
## **Alternative 3: Rural Extension**

In this Alternative, development is distributed more widely throughout the county with less emphasis on the existing urban areas.

# Land Use, Policy & Transportation Alternatives

- Reviewed by the public, Citizens Advisory Committee, Planning Commission over a half year period
- Approved by the Board of Supervisors on November 27, 2007
- Include 34 Study Areas each with 3 alternative land use scenarios
- Includes Policy Alternatives Document that provides 14 topic areas and 27 policy questions for use in the GP process

# Exhibit showing Land Use Alternative 2 and the 34 Study Areas



# Land Use, Policy & Transportation Alternatives

- Alternatives Evaluation Report released on March 14, 2008
- The Alternatives Evaluation Report will form the basis for decision making throughout the next General Plan Task: Selection of a Preferred Alternative (Meeting Series #4)

# Important Butte County GP 2030 Work Products so far

- 2007-01-27 City/County Summit Workbook
- 2007-02-13 Guiding Principles
- 2007-03-15 GP 2030 Briefing Book
- 2007-05-21 Key Issues Summary
- 2007-08-02 Setting and Trends Report
- 2007-11-27 Final Land Use, Policy & Transportation Alternatives
- 2008-04-14 Alternatives Evaluation Report

# Alternatives Evaluation Report

This extensive evaluation examines the Alternatives with respect to:

- Transportation and Circulation,
- Fiscal Impacts,
- **Agricultural Impacts,**
- Water Supply,
- Wastewater Infrastructure,
- Biological Resources (including the Butte Regional Conservation Plan – HCP/NCCP and Deer Range Maps)
- Cultural Resources
- Public Services (including Schools)
- Safety/Hazards

# Upcoming Events –Meeting Series #4

## Selection of a Preferred Alternative

- Citizens Advisory Committee Meetings
  - April 10 –Paradise Area
  - April 17 –South County
  - April 24 –North County
  - May 1 –County-wide focus
  - June 5 –General Plan Organization
- Planning Commission Study Sessions
  - May 9, 2008
  - May 30, 2008
- Board of Supervisors Study Session
  - July 29, 2008

# General Plan Organization

- Comprehensive Update – Blank Slate
- Opportunities for integration and/or highlighting certain issues
- Traditional approach – Optional Elements (Ag, Water, Economics, Sustainability, Youth, Design, etc.)

# Workshop Series #5

- Start with a Draft Outline of GP 2030
- June 05 Special CAC meeting
- Develop Policies, many of which we already have in the existing Ag Element...refnine them
- Merge Policies with Land Use Map to finalize Preferred Alternative
- Draft General Plan 2030
- Starts after July 19, 2008

# Stay Informed

- Butte County General Plan 2030  
Website [www.buttegeneralplan.net](http://www.buttegeneralplan.net)
- General Plan Discussion Forum
- Public Access Channel 11 replays  
Meetings (Public Workshops, Citizens  
Advisory Committee, Planning  
Commission, Board of Supervisors)



# Butte County General Plan 2030

[an Homepage](#)

[LOGIN](#)

[Development Services Ho](#)

- [Completed GP 2030 Products](#)
- [Meetings](#)
- [Helpful Information](#)
- [Contact Us](#)
- [Search](#)

## Background Information

- [Calendar](#)
- [Citizens Advisory Committee](#)
- [eBinder](#)
- [FAQs](#)
- [Glossary of Terms](#)
- [Links](#)
- [Search](#)
- [Video Library](#)

## Online Discussion Forum

## Butte Photos

## Quick Facts

Welcome to the **Butte County General Plan 2030 Website**  
 (Last Update: 2008-04-07)

### Announcements

[Online Discussion Forum...ENTER HERE](#)

**The Public Workshop (Workshop Series Meeting #4-1) held on March 27, 2008 will be broadcast on April 7<sup>th</sup> at 7:00 pm, on Channel 11**

#### What About Water?

Does Butte County care about water, and how is the General Plan process addressing water-related issues? [Click here to find out](#)

[Policy Alternatives Showing Board of Supervisors Modifications made 2007-11-27 meeting](#)  
 <posted 2008-03-22>



**NEWSFLASH...** The [Alternatives Evaluation Report](#) is NOW AVAILABLE online (CDs available next week)...736 page document packed with critical information for use in Workshop Series #4.

## Meeting

[Workshop Series](#)  
 Selection of Preferred Alternatives

[#4-1 - 03-27-2008](#)  
 This meeting will be broadcast on Channel 11 at 7 pm on Thursday, April 7, 2008.



**Meeting Locations Set**

- [#4-2A - 04-10-2008 \(Agenda Posted\)](#)
- [#4-2B - 04-17-2008](#)
- [#4-2C - 04-24-2008](#)



Tim Snellings, Director  
Butte County Department of Development  
Services (DDS)

[tsnellings@buttecounty.net](mailto:tsnellings@buttecounty.net) 530-538-6821  
[www.buttegeneralplan.net](http://www.buttegeneralplan.net)