

# Agricultural Land Protection Tools



## **Butte County Citizens Advisory Committee**

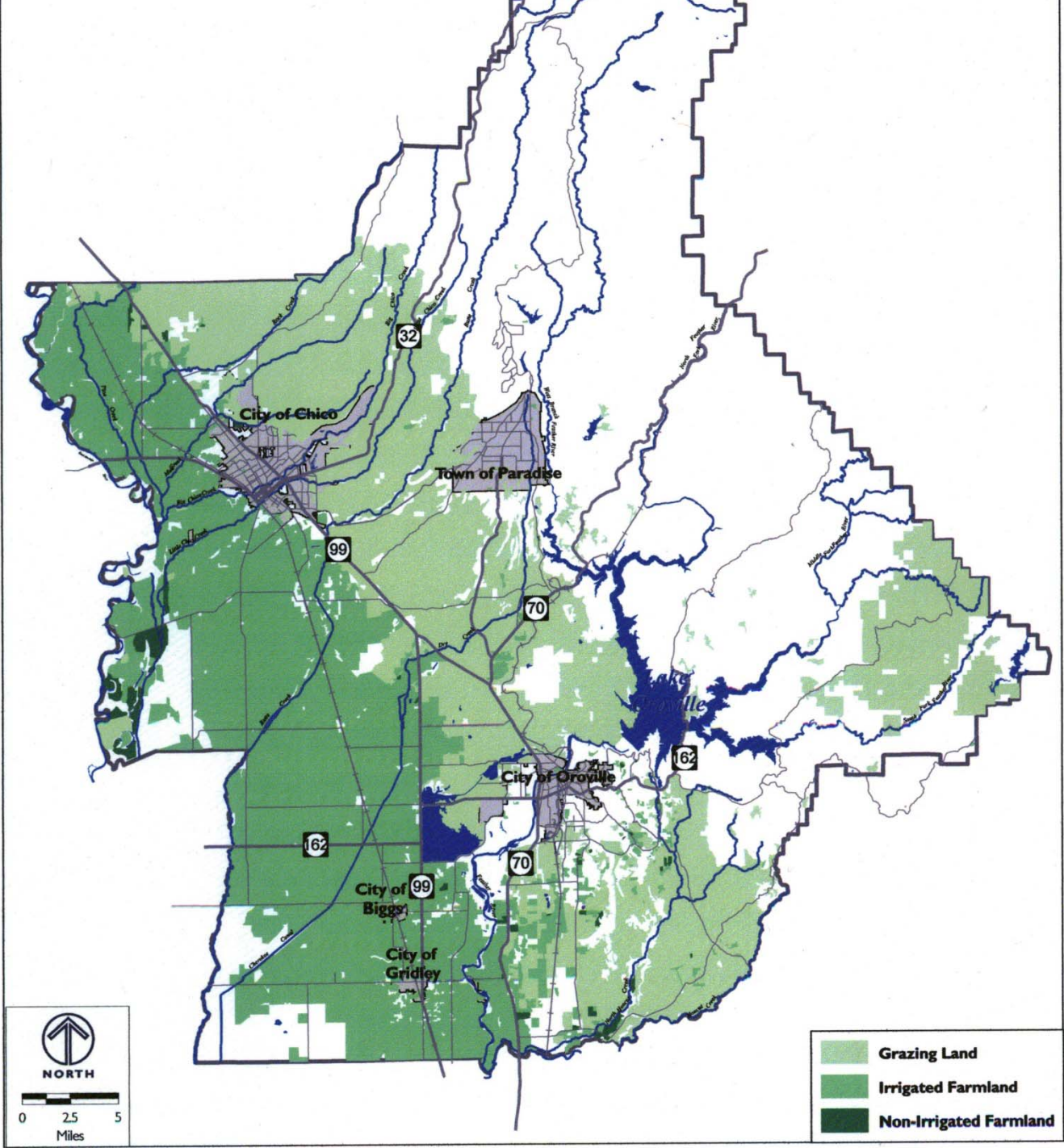
Jamison Watts  
Executive Director  
Northern California Regional Land Trust

October 9, 2008

# Butte County Agricultural Land

## □ Existing Setting

- According to California's Farmland Mapping and Monitoring Program (FMMP), Butte County has over 512,000 acres of agricultural land, including approximately 249,734 acres of irrigated farmland.
- The agricultural economy in Butte County is strong—in 2001, the net worth of the agricultural industry totaled over \$287 million; in 2005, the gross value was \$439 million.
- According to FMMP, Butte County lost 7,700 acres of agricultural land to incompatible uses 2002-04
- Most of the converted land is within city Sphere's of Influence where land is at greater risk of conversion.



# Tools available to protect Butte County Farmland



- **Agricultural Protection Policy**
- **Strong Agricultural Element**
- **Policies to Discourage Ranchette Development**

# Agricultural Protection Policy

## **Maintain Integrity of the Williamson Act**

- ▣ Administered by the County, agricultural landowners voluntarily restrict their land to agriculture or open space and receive property tax deductions.

## **Agricultural Protection Zoning (APZ)**

- ▣ Designates mandatory areas where farming is the desired land use, generally on the basis of soil quality and historical agricultural use.
- ▣ Other land uses are discouraged.

# Agricultural Protection Policy

## Establish Effective Urban Growth Boundaries

- ▣ Separate urbanized areas from non-urbanized areas by identifying the locations in which urbanization can occur.
- ▣ Control sprawl, encourage increased densities inside boundary and establish protected greenbelts of agriculture or open space around the perimeter.
- ▣ Example: City of Chico Greenline which is the City's western city limit forcing growth away from prime farmland.

## Create Agricultural Buffers or Setbacks

- ▣ Example: *Butte County Agricultural Buffer Setback Ordinance*.
  - Requires 300-ft. agricultural buffers for all new residential development in Butte County.
  - Other land uses are discouraged.

# Agricultural Protection Policy

## **Adopt a policy or ordinance to require mitigation for the loss of farmland**

- Protect farmland by providing equivalent farm acreage elsewhere when farmland is converted to other uses.
- Party responsible for the need to mitigate is required to permanently protect at least one acre of farmland for every acre of farmland they convert to incompatible uses.
- Farmland is permanently protected with an agricultural conservation easement.

# Agricultural Protection Policy

- **Eligible mitigation land should meet the following criteria:**
  - Comparable or better soil quality.
  - Adequate water supply.
  - Unencumbered by another easement.
  - Located within County.
    - First priority is to mitigate within 2 miles of subject property.
    - If no land available in 2 mile radius, land outside area may be considered if land is equal or better agricultural value.

# Agricultural Protection Policy

- **Agricultural Conservation Easements**
  - A voluntary, legally recorded agreement between a landowner and qualified conservation organization.
  - Restrict land use to agricultural and open space uses.
  - Landowner is financially compensated for the development rights which are extinguished.
  - Land trusts like the Northern California Regional Land Trust (NCRLT) can purchase easements or land with donated funds, or accept donations of agricultural conservation easements.

# Funding for Agricultural Easements

## □ Sources of Funding in California:

- CA Department of Conservation (estimated \$20 million a year).
- Federal Farm and Ranchland Protection Program (Latest Farm Bill - \$200 Million).
- Mitigation \$\$ as projects are approved.
- Sales Tax Revenues – Example: Sonoma County Measure F (passed in Nov 2006 : 75% YES).
  - Continues current Open Space sales tax of  $\frac{1}{4}$  of one percent (0.25%) for protection of community separators and greenbelts, scenic landscapes, productive Agland, sensitive habitat, riparian corridors and other open space projects.

# Who manages Agricultural Easements?

- **Qualified land trusts (Northern CA Land Trust) hold agricultural easements**
  - ▣ NCRLT is aware of farmers who are interested in putting agricultural easements on their farmland.
  - ▣ Provide baseline documentation, annual monitoring and legal defense in perpetuity for the agricultural easement.

# Strong Agricultural Element

## □ **Stanislaus County Ag Element**

- 1:1 Mitigation when proposed project zoning change from Agriculture to Residential.
- Encourage higher density and infill in already existing urban areas.
- Subdivision of Ag Land should not result in parcels for residential purposes.
- Minimum parcel sizes allowed for lands designated Ag shall not promote the expansion of existing, or creation of new ranchette areas.

# Strong Agricultural Element

## □ **Stanislaus County Ag Element (cont.)**

- Evaluate future projects on a case by case basis to determine whether conversion of Ag Land will have an adverse effect on the environment.
- Participate in efforts to identify strategic agricultural land.
- Encourage cities to adopt Agricultural Mitigation ordinance.

# Policies to Discourage Ranchette Development

- **Local government should take the following steps regarding ranchettes:**
  - ▣ Place a moratorium on all new rural ranchettes.
  - ▣ Identify areas where they should be discouraged.
  - ▣ Identify areas where they should be encouraged.
    - Where land is already divided in smaller lots.
    - Where public services are already located.

# Policies to Discourage Ranchette Development

- **Local government should take the following steps regarding ranchettes (cont.):**
  - ▣ **In Areas Where Permitted**
    - Establish a specific number of ranchettes.
    - Permit the subdivision of existing parcels.
    - Adopt lot size standards, lot configuration, and buffers on ranchette parcels to minimize conflicts with agriculture.

# Policies to Discourage Ranchette Development

- **Local government should take the following steps regarding ranchettes (cont.):**
  - ▣ **In Areas Where Discouraged**
    - Increase lot size to reflect viability (example: 40 acres for cropland, 160 acres for rangeland).
    - Prohibit subdivision of land into smaller parcels except for farm residences.
    - Require right to farm ordinance in deeds that create ranchette parcels in agricultural areas.
    - Require agricultural easements on remainder of parcel when clustering.

# Policies to Discourage Ranchette Development

- **Local government should take the following steps regarding ranchettes (cont.):**

- **In All Areas Where Ranchettes are Allowed**

- Adopt graduated impact fees based on distance of public service and their costs.
- Adopt similar fee structure based on quality of soil and location.
- Reduce the number of existing development entitlements by using mitigation fees to purchase agricultural easements in strategic farmland areas

# Northern CA Regional Land Trust

## Contact Information

---

- **Jamison Watts, Executive Director**
- **[jwatts@landconservation.org](mailto:jwatts@landconservation.org)**
- **(530) 894-7738**
- **Website: [www.landconservation.org](http://www.landconservation.org)**

# References

- Butte County Department of Development Services. August 2, 2007. *Butte County General Plan, Settings and Trends Report Public Draft*. Oroville, CA.
- Stanislaus County General Plan website: <http://www.co.stanislaus.ca.us/PLANNING/pl/general-plan.shtm>
- Pers. Comm. , Mike Darnell, American Farmland Trust. October 8, 2008.