

Butte County General Plan 2030

Concow/Yankee Hill



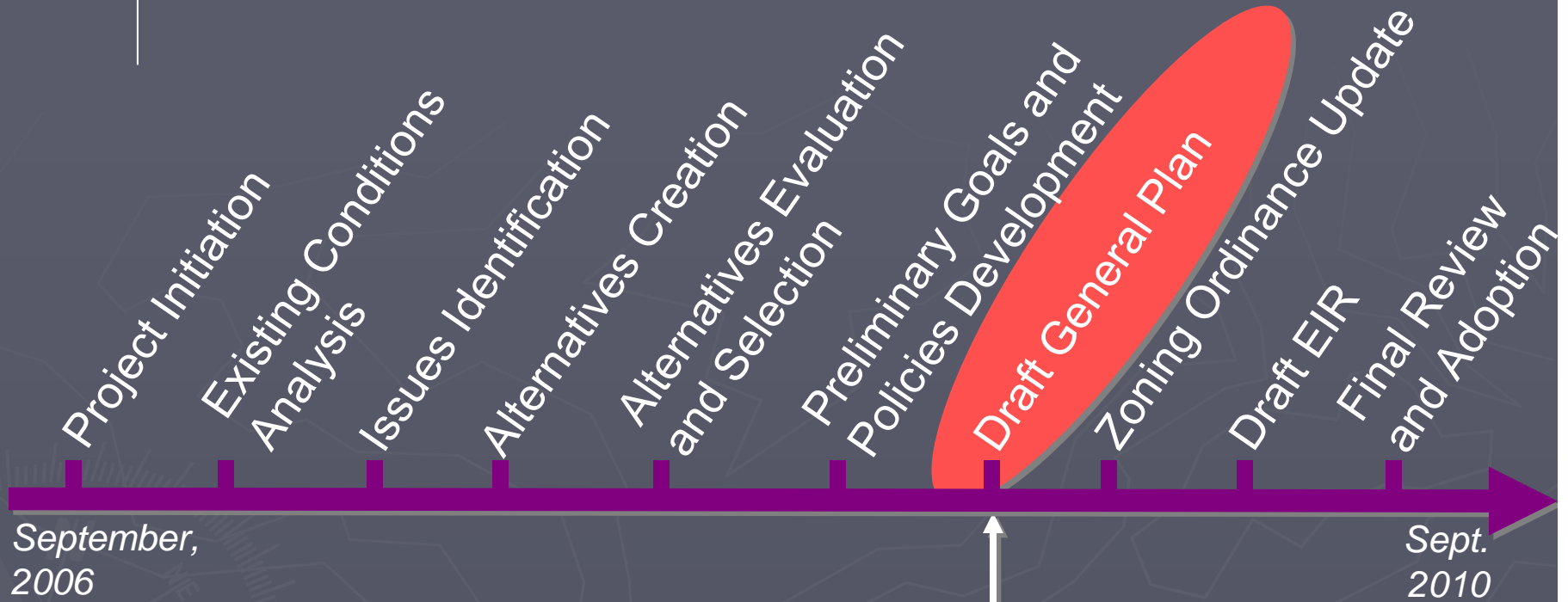
October 28, 2009
Butte County Department of Development Services
Dan Breedon, Principal Planner

GP 2030 Project

Components:

- ▶ Comprehensive General Plan
 - General Plan 2030 Land Use Map
 - General Plan 2030 (document)
- ▶ Revised Zoning Ordinance
 - Zoning Map
 - Zoning Ordinance (document)
- ▶ Environmental Impact Report (EIR)

WHERE ARE WE TODAY?



We Are Here

Current Meeting Series: Draft General Plan 2030

- ▶ September 17, 2009 Public Workshop
- ▶ Citizens Advisory Committee Meetings
 - October 22 (Land Use & GP Map, Circulation)
 - October 29 (Agriculture, Water Resources, Conservation & OS)
 - November 5 (Econ. Dev., Health & Safety, Public Fac. & Services)
- ▶ Board of Supervisors and Planning Commission Study Sessions
 - January 19 and 21, 2010

Important Butte County GP 2030 Work Products

- ▶ 2007-01-27 City/County Summit
- ▶ 2007-02-13 Guiding Principles
- ▶ 2007-03-15 GP 2030 Briefing Book
- ▶ 2007-05-21 Key Issues Summary
- ▶ 2007-08-02 Setting and Trends Report
- ▶ 2007-11-27 Final Land Use, Policy & Transportation Alternatives
- ▶ 2008-04-14 Alternatives Evaluation Report
- ▶ 2008-07-30 Preferred Land Use Alternative
- ▶ 2009-04-23 Final Goals and Policies and Land Use Map
- ▶ 2009-08-25 Housing Element Adoption
- ▶ 2009-09-04 Draft General Plan 2030

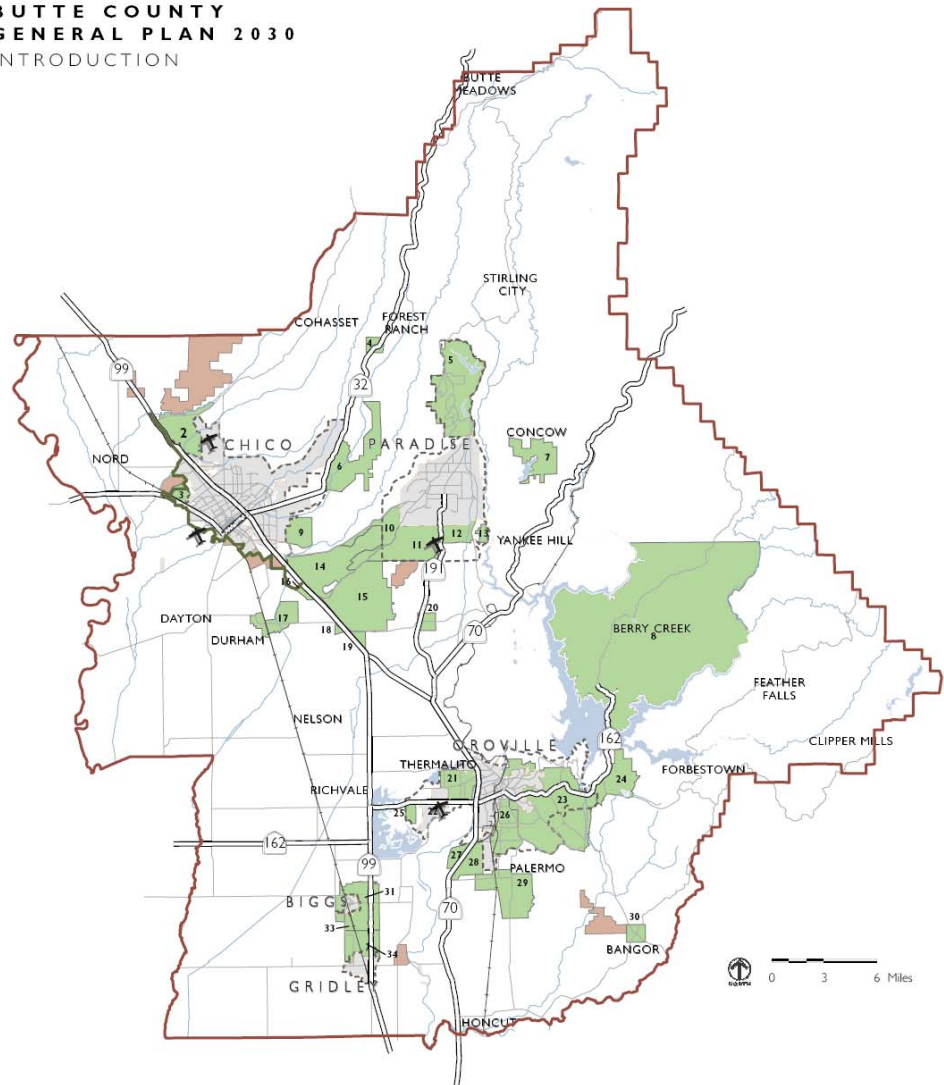
Butte County's Preferred Land use Alternative

- ▶ Approved by the Board on July 29 & 30, 2008
- ▶ Incorporates recommendations from the public, Citizens Advisory Committee and Planning Commission
- ▶ Provides recommendations for 31 individual study areas throughout the County
- ▶ Generally maintained land uses outside of study areas –Exceptions: Ag lands, Agricultural Residential designation

Concow Study Area and Yankee Hill

- ▶ Board Adopted Resource Conservation General Plan designation (new designation, which allows 40-acre parcels)
- ▶ Yankee Hill received Foothill Residential designation (similar to existing designation, which allows residential densities from 1-40 acres)
- ▶ EXISTING LEGAL RESIDENTIAL PARCELS ARE CONSIDERED GRANDFATHERED AND ARE ALLOWED TO DEVELOP SINGLE FAMILY RESIDENCES

**BUTTE COUNTY
GENERAL PLAN 2030
INTRODUCTION**



Note: The study areas shown on this map include areas that were reviewed and considered during Meeting Series #2/3.
Source: DC&E GIS, 2007.

- Airports
- Greenline
- Highways
- Railroad
- Major Roads
- Sphere of Influence
- City/Town Limits
- Final Approved Study Areas
- Study Areas Considered but Rejected
- County Boundary

**FIGURE IN-2
STUDY AREAS**

Butte County General Plan 2030 Organization

- ▶ Introduction & Overview (including discussions of sustainability and youth development as part of the County's Vision Statement)
- ▶ Land Use Element
- ▶ Housing Element (Adopted August 25, 2009)
- ▶ *Economic Development Element*
- ▶ *Agricultural Element*
- ▶ *Water Element*
- ▶ Circulation Element
- ▶ Conservation & Open Element
- ▶ Health & Safety Element (including the Noise Element)
- ▶ *Public Facilities & Services Element*

Key Board Adjustments to the Land Use Map

- ▶ Combine GOL & OFC GP designations into a new "Agriculture" designation and approved 20 – 320 acre range
- ▶ Elimination of "Agriculture Residential" General Plan designation
- ▶ Agriculture Re-use Parcels – Designated "Agriculture Services" on Land Use Map
- ▶ Implement Deer Range Maps and "Designated Development Zones"

Next Steps

- ▶ Receive input from Residents/Community Group
- ▶ Staff Prepares Report to Board prior to November 10
- ▶ December 8, 2009 Board of Supervisors Meeting: 25 County Center Drive, Oroville from 1:30 pm – 4:00 pm
 - Board Considers changes to area General Plan designations