

A RESOLUTION OF THE BOARD OF SUPERVISORS  
REGARDING GENERAL PLAN 2030  
DIRECTING THE DEPARTMENT OF DEVELOPMENT SERVICES  
FOR FURTHER STUDY AND TO  
PRESENT SPECIFIC GENERAL PLAN MAP AMENDMENTS  
FOR LAND CURRENTLY DESIGNATED AGRICULTURE TO RURAL  
RESIDENTIAL IN THE BIGGS, GRIDLEY, AND PALERMO AREAS.

WHEREAS, Butte County has completed a comprehensive update to its general plan, known as Butte County General Plan 2030; and

WHEREAS, General Plan 2030 is intended to be a living, dynamic, and comprehensive document; and

WHEREAS, the General Plan 2030 process was a process with thorough, detailed analysis and included public and agency input by written comments and oral testimony; and

WHEREAS, there are areas of land in proximity of Biggs, Gridley and Palermo with a land use designation of Agriculture in General Plan 2030 that were identified late in the update process as being candidate areas for a more suitable designation of Rural Residential because of existing conditions such as parcel size. These areas are shown in Exhibit A and total approximately 4,566 acres; and

WHEREAS, these areas were considered by the Board of Supervisors on September 29, 2010 and staff was directed to conduct a review of inclusion of these areas in General Plan 2030; and

WHEREAS, the change from Agriculture to Rural Residential on the lands identified in Exhibit A requires additional public review and analysis under the California Environmental Quality Act (CEQA) than that contained in the General Plan 2030 Environmental Impact Report and is more appropriately considered as an amendment to the recently adopted General Plan 2030.

NOW THEREFORE BE IT RESOLVED that the Board of Supervisors directs the Department of Development Services to process appropriate CEQA documentation with a General Plan Amendment consistent with and limited to the areas identified in Exhibit

A to re-designate the areas from Agriculture to Rural Residential and to present the proposed Amendment to the Board of Supervisors for their consideration.

DULY PASSED AND ADOPTED this 26<sup>th</sup> day of October 2010, by the following vote:

AYES:

NOES:

ABSENT:

ABSTAIN:

---

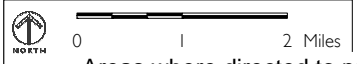
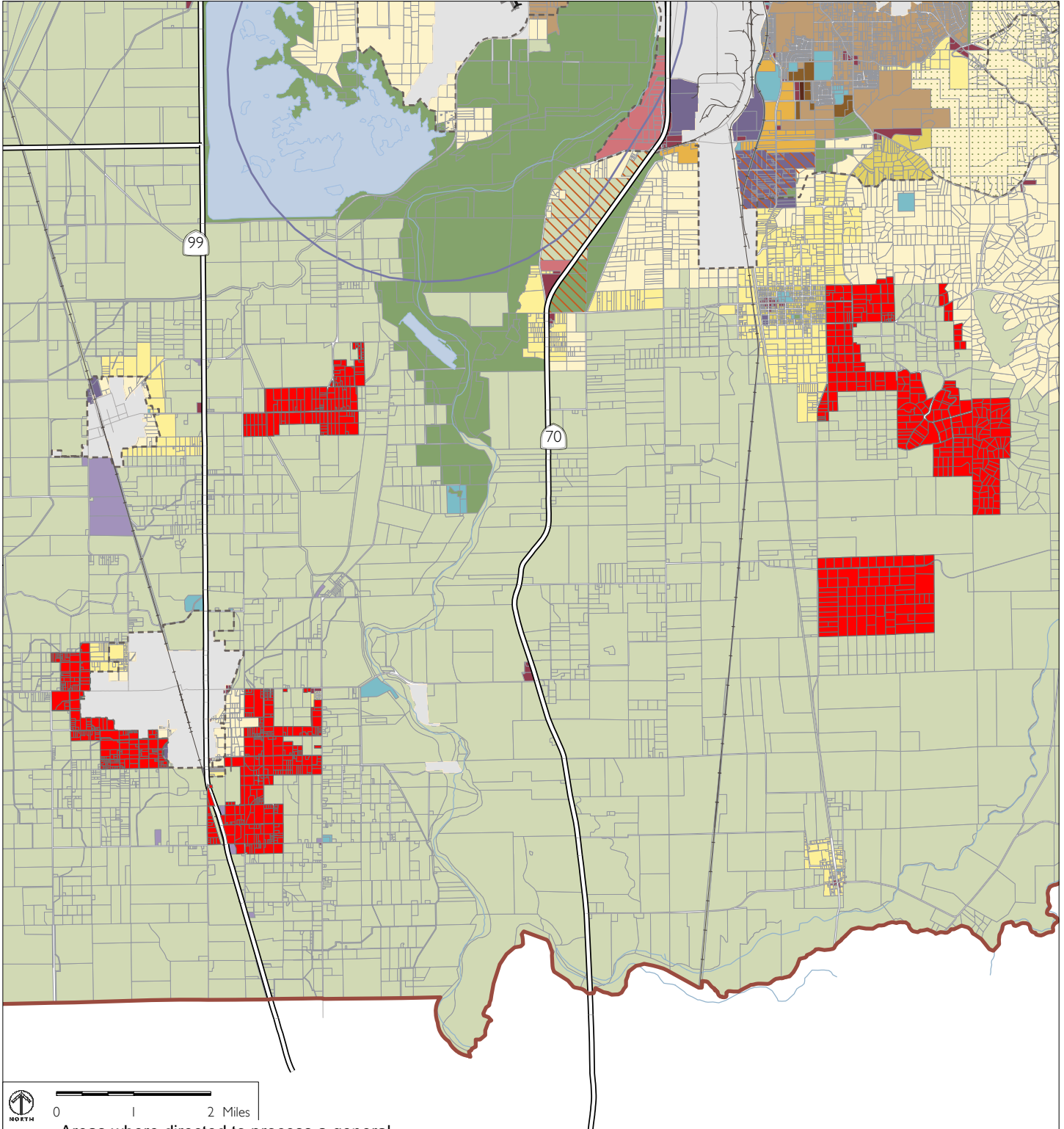
**Bill Connelly**, Chair  
Board of Supervisors  
County of Butte, State of California

ATTEST:

---




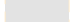
**Paul Hahn**, Chief Administrative Officer  
and Clerk of the Board  
County of Butte, State of California


EXHIBIT A



Areas where directed to process a general plan amendment from Agriculture to Rural Residential



-  Railroad
-  Major Roads
-  Sphere of Influence
-  City/Town Limits

 Highways