

Gridley and Biggs Unincorporated Area Community Meeting Butte County General Plan 2030

Butte County Department of
Development Services
May 7, 2007



What is a General Plan?

- Under California Law, the General Plan is considered the "constitution" for land use and development and represents a jurisdiction's own vision and **policy** for the future.
- The General Plan is shaped by the citizens of Butte County and adopted by their elected representatives serving on the Board of Supervisors.
- The General Plan is considered a master "blueprint", all other County regulations are required to be consistent with its instruction and policy.

Butte County General Plan Elements (Chapters)

Required Elements:

- Land Use, 1979
- Circulation, 1984
- Housing, 2004
- Conservation, 1971
- Open Space, 1976
- Safety, 1977
- Noise, 1977

General Plan Elements

Existing Optional Elements:

- Scenic Highway Element, 1977
- Seismic Safety, 1977
- Recreation, 1971
- Agriculture, 1995

Citizens Advisory Committee

- Citizens Advisory Committee (CAC) on May 23, 2006 the Board of Supervisors passed Resolution 06-085 approving the creation of a Citizens Advisory Committee for the General Plan Update



Butte County

Tim Snellings, Development Services Director
Dan Breedon, Project Manager
Pete Calarco, Chuck Thistlethwaite, Noel Carvalho

DESIGN, COMMUNITY & ENVIRONMENT

Project Management; General Plan, Community Outreach, Environmental Review

David Early, AICP, Principal, Lead Facilitator
Ellen Clark, Senior Associate-in-Charge
Tanya Higgins, Associate, Project Manager

Crawford, Multari &
Clark Associates

Zoning Ordinance

Paul Crawford, Principal

Fehr & Peers
Associates

*Circulation and
Transportation*

Jeff Clark, Senior Associate

Jones & Stokes
Associates

*Biology, Cultural Resources,
Air Quality, Noise*

Maggie Townsley,
Project Director

Bay Area Economics

*Economic and Fiscal
Analysis*

Matt Kowta, Principal

Questa Engineering

*Infrastructure, Geology,
Hydrology, Hazards*

Norm Hantzche,
Managing Engineer

Gallaway Consulting

Migratory Deer Range

Jody Gallaway,
President and Wildlife
Biologist

Butte County General Plan 2030 Process

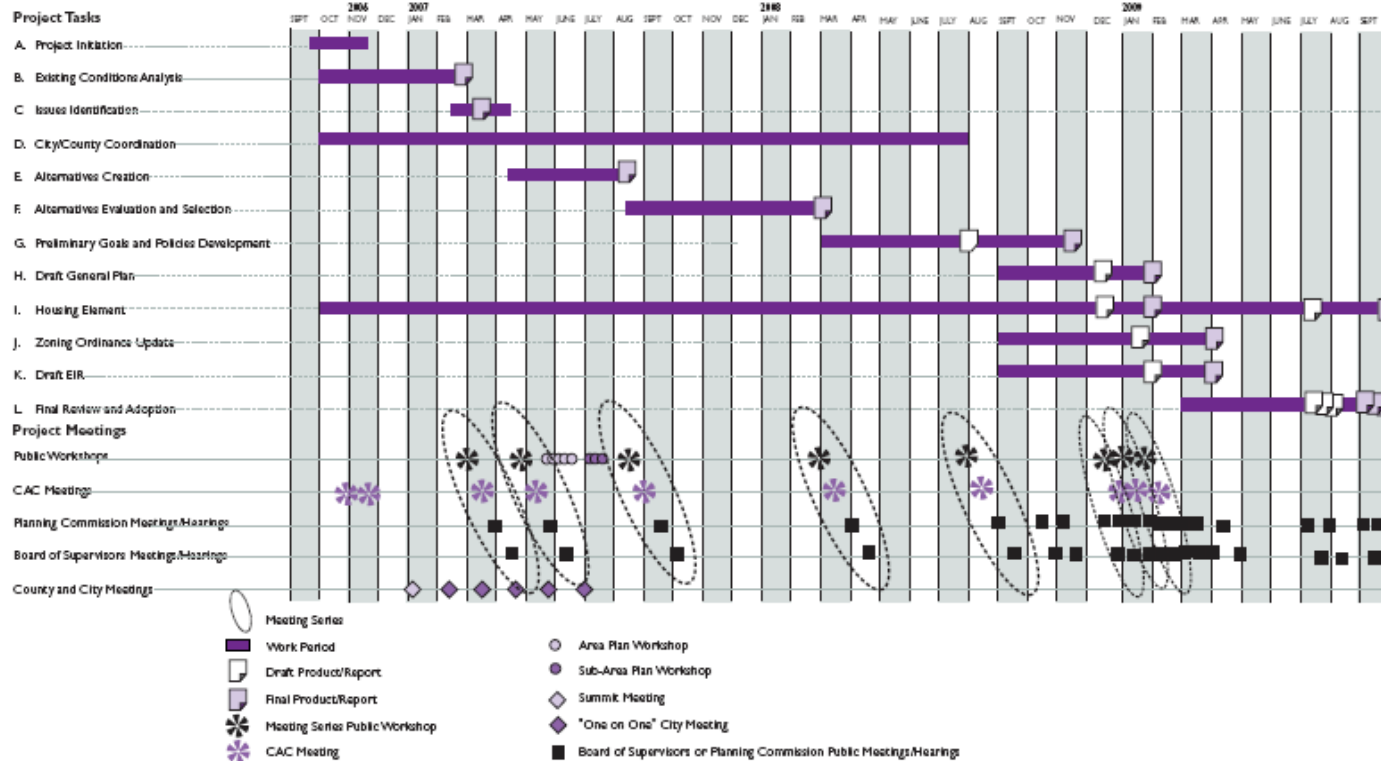
12 major tasks:

- Project Initiation (*Began September 12, 2006*)
- Existing Conditions Analysis (*Ongoing*)
- Issue Identification (*Ongoing*)
- Butte County and City Cooperation and Outreach (*Ongoing*)
- Development of Alternatives (*Begins May 17, 2007*)
- Alternatives Evaluation and Selection
- Preliminary Goals and Policies Development
- Draft General Plan
- Housing Element Update
- Development Code and Zoning Ordinance Update
- Draft EIR
- Final General Plan, Final Zoning Ordinance and Final EIR Review and Adoption

General Plan 2030 Project Schedule

ROUTE COUNTY
GENERAL PLAN UPDATE, ZONING ORDINANCE UPDATE AND EIR

PROJECT SCHEDULE
FIGURE 1



SCOPE OF SERVICES
DESIGN, COMMUNITY & ENVIRONMENT

Process. . .

- 8 “Meeting Series” each consisting of:
 - A Public Workshop
 - A Citizens Advisory Committee Meeting
 - A Planning Commission Study Session
 - A Board of Supervisor Study Session

(Used to provide input, guide process and review work)

Process. . .

Butte County General Plan Road Show:

■ Community Meetings

- 7 "Area-Wide" Meetings (Central Buttes, Durham, Dayton & Nelson, Unincorporated Gridley/Biggs, Unincorporated Paradise, Unincorporated Chico, Unincorporated Oroville, Lake Oroville Area)
- 1 "Economic Summit" to focus on Butte County's Economy

Process. . .

Butte County General Plan Road Show:

- 12 Community Level Meetings (Cherokee, Cohasset, Concow/Yankee Hill/Jarbo Gap, Feather Falls/Forbestown/Clipper Mills, Forest Ranch, Nord, Palermo/Honcut, Berry Creek/Brush Creek, Richvale, Stirling City, Bangor/Rackerby, Butte Meadows/Jonesville)

Process. . .

- 6 City/County Coordination and Outreach Meetings:
 - January 27, 2007 City/County Summit Meeting
 - 5 individual "1 on 1" meetings between each incorporated city/town and the County

March 15, 2007 Public Workshop (Issue Identification)

- Approximately 55 members of the public and 20 Committee members attended
- Summarized the General Plan 2030 process
- Presented the Existing Conditions Briefing Book
- Ten breakout groups identified assets and issues in Butte County and reported back to the larger group

March 29, 2007 Citizens Advisory Committee (Issue Identification)

- 22 CAC members; 12 members of the public
- Presented the Existing Conditions Briefing Book
- Reviewed results of City/County Summit
- Reviewed the list of issues and assets from the public workshop
- Four breakout groups identified additional assets and issues.

April 13, 2007 Planning Commission Study Session (Issue Identification)

- Reviewed all data and information on Butte County Assets and Issues Generated by the Public Workshop and Citizens Advisory Committee Meeting
- The Planning Commission provided additional issues for consideration by the Board on May 8, 2007 (Board of Supervisors Study Session)

Guiding Principles

- Encompasses broad reaching issues while providing general direction for the General Plan Update
- Reviewed by the Planning Commission on April 27, 2006, the Board of Supervisors on May 23, 2006, the Citizens Advisory Committee on December 7, 2006, the Planning Commission on January 11, 2007, and approved by the Board of Supervisors on February 13, 2007

NOTE: Principles do not implement policy

13 Guiding Principle Topics

1. Cooperative Planning
2. Circulation
3. Growth/Urban Development/Housing
4. Airport Land Use Planning
5. Natural Resources and Environment
6. Public Health and Safety
7. Economic Development
8. Agriculture
9. Rural Development
10. Recreational Opportunities and Protection of Cultural Resources
11. Sustainability
12. Public Services
13. Water Resources

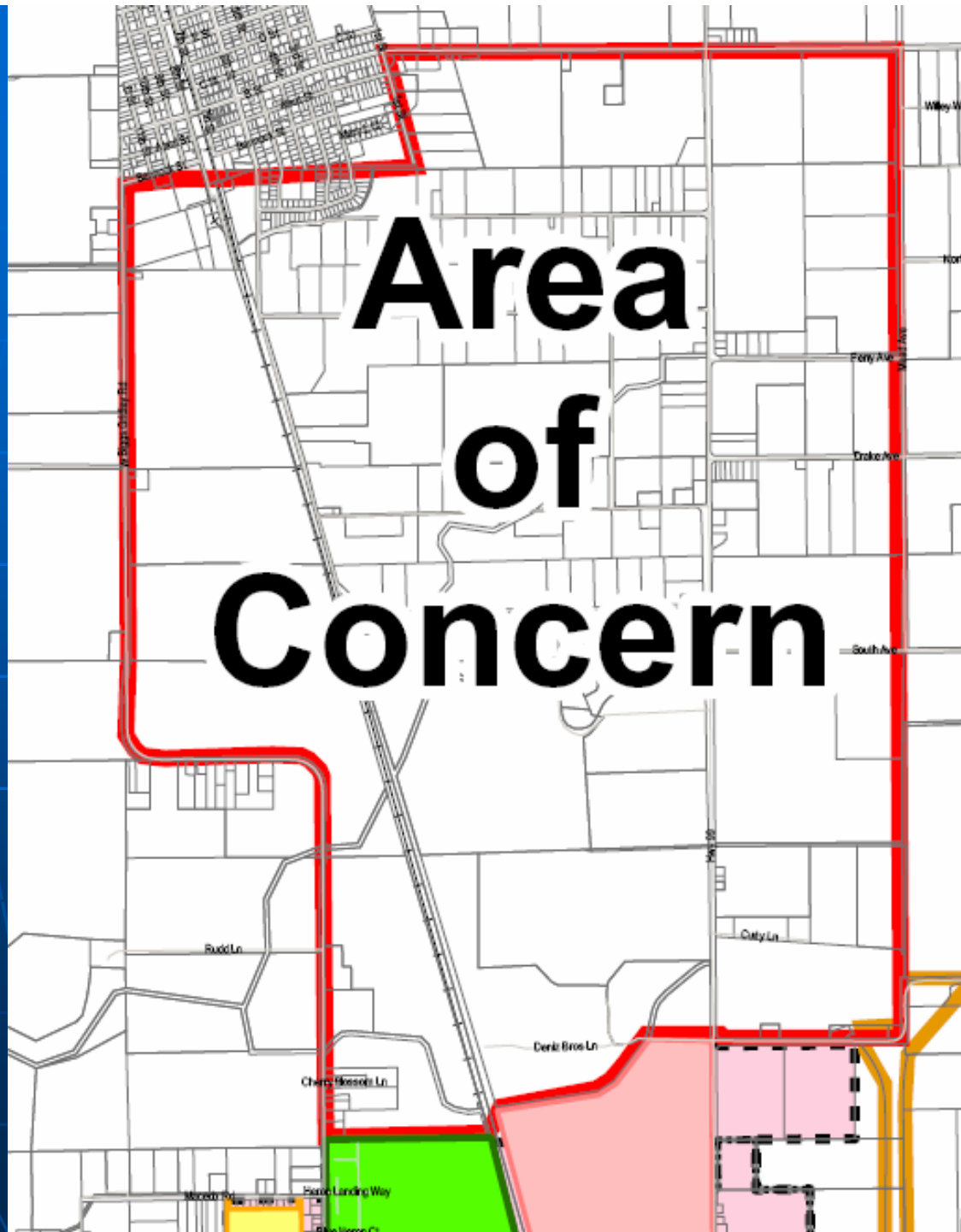
How will/can they be used?

- Provided to: Citizens Advisory Committee, Public, Board of Supervisors, Planning Commission, Development Services staff, and General Plan Consultant
- To give direction to the General Plan 2030 process
- To help organize information generated by the General Plan 2030 Process
- To help frame your input regarding your community

Elephants in the Room



Area of Concern



Unincorporated Gridley and Biggs Area

Existing Conditions and
Issues